

Working Paper Series — 5/2024

# Origins of Post-COVID-19 Inflation in Central European Countries

*Natálie Dvořáková, Tomáš Šestořád*



Czech National Bank — Working Paper Series — 5/2024

The Working Paper Series of the Czech National Bank (CNB) is intended to disseminate the results of the CNB's research projects as well as the other research activities of both the staff of the CNB and collaborating outside contributors, including invited speakers. The Series aims to present original research contributions relevant to central banks. It is refereed internationally. The referee process is managed by the CNB Economic Research Division. The working papers are circulated to stimulate discussion. The views expressed are those of the authors and do not necessarily reflect the official views of the CNB.

Distributed by the Czech National Bank, available at [www.cnb.cz](http://www.cnb.cz)

Reviewed by: Valentin Jouvanceau (Bank of Lithuania)  
Michal Franta (Czech National Bank)

Project Coordinator: Volha Audzei

Issued by: © Czech National Bank, September 2024

# Origins of Post-COVID-19 Inflation in Central European Countries

Natálie Dvořáková and Tomáš Šestořád \*

## Abstract

This paper examines the drivers of the post-pandemic surge in inflation in four small open economies: Czechia, Hungary, Poland, and Slovakia. For this purpose, a Bayesian structural vector autoregressive model with sign-zero restrictions and block exogeneity is employed. The results show that both foreign demand and foreign supply shocks have contributed significantly to inflation in the post-2020 period across countries, alongside notable contributions from domestic factors explaining differences among economies. Specifically, supply-side shocks are identified as the primary domestic factor across all countries, whereas domestic demand shocks were much less influential. Exchange rate shocks were pronounced in Hungary only, while monetary policy shocks have had a minimal impact on inflation since 2022 in all the countries considered. Additionally, we provide decompositions of core inflation, highlighting the predominance of domestic factors.

## Abstrakt

Tento článek zkoumá faktory, které vedly k prudkému postpandemickému nárůstu inflace ve čtyřech malých otevřených ekonomikách: Česku, Maďarsku, Polsku a na Slovensku. Za tímto účelem je použit bayesovský strukturální vektorový autoregresní model se znaménkovými a nulovými restrikcemi a blokovou exogenitou. Výsledky ukazují, že k inflaci po roce 2020 ve všech zkoumaných zemích významně přispěly spolu se zahraničními poptávkovými a nabídkovými šoky také domácí faktory, které vysvětlují rozdíly v mírách inflace mezi ekonomikami. Jako hlavní domácí faktor byly ve všech zemích identifikovány nabídkové šoky, kdežto domácí poptávkové šoky měly mnohem menší vliv. Kurzové šoky byly výrazné pouze v Maďarsku, zatímco měnověpolitické šoky měly od roku 2022 ve všech zkoumaných zemích minimální dopad na inflaci. Kromě toho článek obsahuje dekompozice jádrové inflace, které zdůrazňují převahu domácích faktorů.

**JEL Codes:** C32, E31, E32, E52, F41.

**Keywords:** Bayesian VAR, extraordinary events, inflation, sign-zero restrictions, small open economies.

---

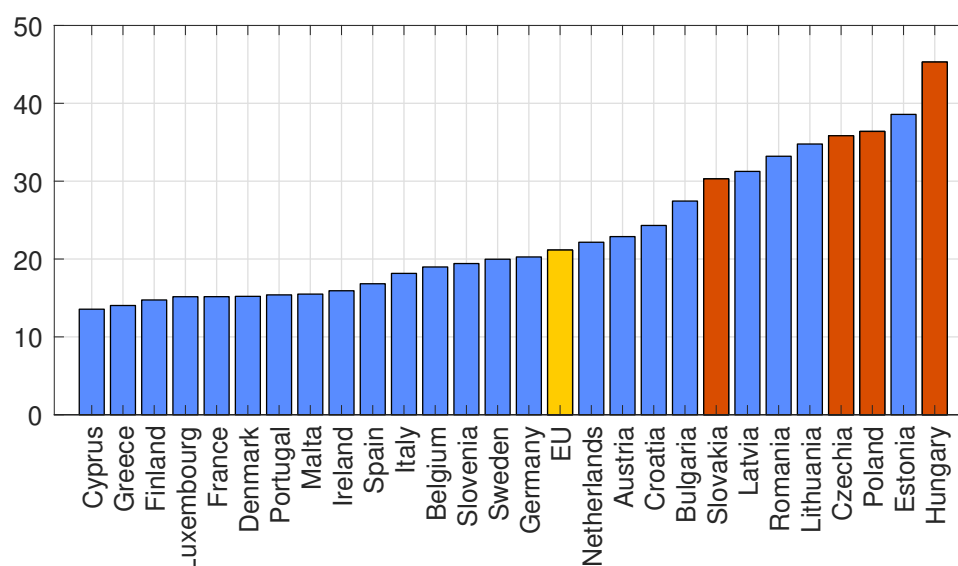
\* Natálie Dvořáková, Charles University, Institute of Economic Studies, 30945214@fsv.cuni.cz  
Tomáš Šestořád, Czech National Bank; Charles University, Institute of Economic Studies, tomas.sestorad@cnb.cz  
We are grateful to Volha Audzei, Jaromír Baxa, Michal Franta, Valentin Bernard Jouvanceau, and Jan Žáček for helpful comments and suggestions. The opinions and views expressed in this paper are those of the authors and do not necessarily reflect the position and views of the Czech National Bank or any other institution with which the authors are associated. Responsibility for all remaining errors and omissions rests solely with the authors.

## 1. Introduction

Understanding what drives inflation, and to what extent, is crucial for policy-making. In most countries, the real economy recovered quickly after the COVID-19 shock, but inflation reached levels not seen in decades. Following the relaxation of most pandemic-related measures, there was a strong recovery in demand. In addition to deferred consumption and forced savings, demand was supported by generous fiscal measures. The supply side faced challenges due to pandemic-induced restrictions on firms, later compounded by disruptions to global value and supply chains. As a result, the production sector of the economy had difficulty meeting the rapidly recovering demand. Russia's invasion of Ukraine amplified the already substantial increase in energy commodity prices, contributing to the energy crisis in Europe.

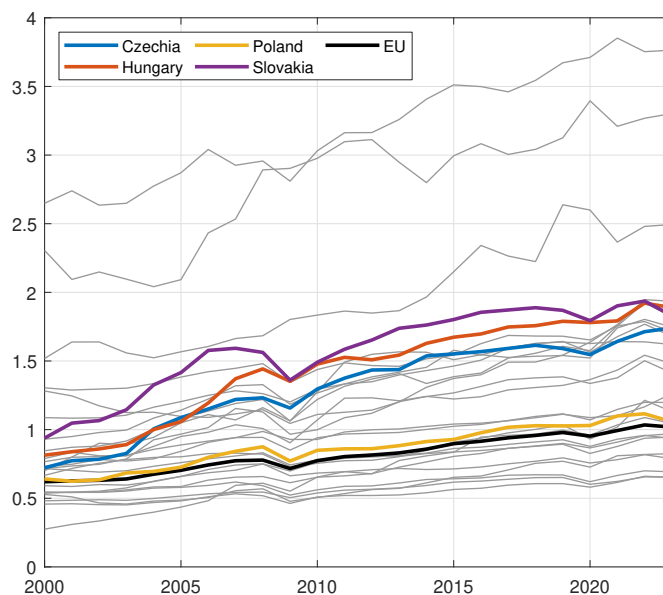
In this paper, we focus on explaining the post-pandemic spike in inflation in the Visegrád Group countries, namely Czechia, Hungary, Poland, and Slovakia. As depicted in Figure 1, these countries have experienced some of the highest price level increases in the European Union since the outbreak of the pandemic. They share several similarities, including geographical proximity to Russia, lower initial GDP and price levels, less competitive retail markets, and higher energy intensity. Furthermore, with the exception of Poland, they are very open small economies compared to the EU average (Figure 2).<sup>1</sup> Although the countries are similar in many respects, Slovakia is the only member of the euro area, while the others have their own monetary policies.

**Figure 1: Percentage Change in Price Level in EU Countries from January 2020 to January 2024**



**Note:** The HICP index is used for the comparison of price levels. The data are obtained from Eurostat.

<sup>1</sup> Regarding Poland, even though it is still considered a small economy, its level of openness is rather average, suggesting the possibility of less influence from global factors. For instance, compared to the other countries, it coped relatively well with the Global Financial Crisis of 2008 in terms of real GDP (see Appendix A).

**Figure 2: Openness of EU Economies (ratio of exports and imports to GDP)**

**Note:** GDP, exports, and imports in chain linked volumes (2015), million units of national currency. The data are obtained from Eurostat.

This paper aims to examine the origins of the inflation variations in Central European countries through the lens of a Bayesian structural vector autoregression (SVAR) model with sign and zero short-run restrictions, as outlined by Arias et al. (2018). Imposing such restrictions with block exogeneity provides sufficient flexibility to capture structural relationships within small open economies. We specifically show how six shocks—domestic demand, domestic supply, monetary policy, exchange rate, foreign supply, and foreign demand—contribute to inflation until mid-2023. The model is estimated separately for each country to account for the differences among them.

Our analysis is interconnected with two strands of literature. First, we contribute to the post-pandemic debate on the relative importance of supply- and demand-side drivers of the inflation surge. We extend this debate to encompass Central European small open economies, as recent research has predominantly focused on the U.S. and the euro area.<sup>2</sup> Two primary approaches are discernible in the literature: model-based (see, for example, Beaudry et al., 2024; Gagliardone and Gertler, 2023; Rubbo, 2024; di Giovanni et al., 2023; Ball et al., 2022; Bernanke and Blanchard, 2023 for the U.S., and di Giovanni et al., 2022; Arce et al., 2024 for eurozone estimates) and empirical. The former generally aligns with the latter, concluding that both supply- and demand-side shocks mattered, depending on the country and period under examination. The empirical research specifically involves a paper by Shapiro (2022), which shows that demand-driven factors contribute as much as supply-driven factors to U.S. inflation, using a

<sup>2</sup>For Central European small open economies, two relevant studies are worth mentioning. Szafranek et al. (2024) analyse the drivers of inflation in Poland using Bayesian SVAR with zero and sign restrictions, showing that country-specific energy price and global supply shocks mainly drive the post-pandemic inflation surge. To draw implications for Czech monetary policy, Babecká Kucharčuková et al. (2022) examine the global pandemic shock using empirical narrative comparisons and model simulations, and find that the supply nature of the shock dominated from mid-2020. However, their analysis only covers data until the end of 2021 and hence does not address the period of the energy crisis.

two-equation VAR model with sign restrictions.<sup>3</sup> Kabaca and Tuzcuoglu (2023) confirm this result for U.S. inflation using an SVAR model that combines sign, narrative, and variance decomposition restrictions. Eickmeier and Hofmann (2022) estimate a factor model utilizing a large number of inflation and real activity series for the U.S. and the eurozone. They find that the inflation surge since mid-2021 has been driven by both supply and demand factors, with the former being the primary contributor in the euro area. They attribute this difference to the energy supply disruptions stemming from the Russia-Ukraine war. Employing a Bayesian SVAR model of the euro area with sign restrictions, Ascari et al. (2023) align with previous findings, pointing to a significant role for demand factors in the euro area since autumn 2020. Furthermore, Binici et al. (2022), estimating a Phillips curve model of inflation dynamics in a panel setting, find that domestic factors have become influential in determining inflation dynamics across 30 European countries during the post-pandemic period. Second, our paper contributes to the literature that examines the role of monetary policy and exchange rate shocks in the post-pandemic inflation spike. This is relevant especially because the effects of independent monetary policy can be investigated in the case of Czechia, Poland, and Hungary. Banbura et al. (2023) incorporate a monetary policy shock proxy as an endogenous variable in a VAR model to capture the effects of monetary policy in the euro area in their sensitivity analysis.<sup>4</sup> They find that the estimated contribution of the monetary policy shocks to core inflation has been small (and negative) overall. According to them, this may be due to monetary policy mainly affecting core inflation via its systematic component. On the other hand, Neri et al. (2023), using a Bayesian SVAR model with zero-sign and narrative restrictions, identify a positive contribution of monetary policy shocks and shocks to long-term inflation expectations. These factors together account for approximately one-fifth of euro area headline inflation in the fourth quarter of 2022. Employing similar techniques, Ascari et al. (2024) decompose core inflation into six shocks, including a monetary policy shock and an exchange rate shock. Likewise, monetary policy shocks are found to play a slightly positive role in the decomposition after the pandemic. Moreover, they note that the inflationary pressures in 2022 also stemmed from sizeable depreciation shocks to the exchange rate. Additionally, Cohn-Bech et al. (2023) emphasize that exchange rate depreciation contributed to inflation in Hungary following the pandemic.<sup>5</sup>

For all the economies considered, our findings indicate that foreign shocks have played an important role in driving the recent surge in inflation, encompassing both demand shocks, such as deferred post-COVID-19 global consumption, and supply shocks, including disruptions to global value chains and the impact of Russia's aggression in Ukraine. These findings align with the aforementioned literature (e.g., Ascari et al., 2023; Eickmeier and Hofmann, 2022; Gonçalves and Koester, 2022). However, it is essential to recognise that foreign shocks represent only one aspect of the inflationary dynamics, consistent with Binici et al. (2022). Domestic factors, particularly those related to the supply side, have also played a considerable role. This domestic dimension explains most of the differences in inflation rates among countries. On the one hand, the exchange rate shock contributes to inflation in Hungary only, consistent with Cohn-Bech et al. (2023). On the other hand, the role of monetary policy shocks is minor, suggesting that central banks behaved consistently according to their reaction function even during the extraordinary events of previous years. Nevertheless, central banks have not resorted to further tightening, which could have dampened inflation through monetary policy shocks. Furthermore, a significant proportion of

---

<sup>3</sup> Shapiro's method has been widely replicated on an international scale, including by Gonçalves and Koester (2022) for the euro area. The main findings broadly align, indicating that both demand and supply factors were important drivers of the recent inflation surge.

<sup>4</sup> As a baseline, they estimate a medium-sized BVAR model with a factor structure for the residuals.

<sup>5</sup> They use local projection techniques outlined by Caselli and Roitman (2019) as a benchmark and update the analysis until 2022, indicating an increase in exchange rate pass through to inflation.

inflation remains unexplained. This might be evidence of possibly less well-anchored inflation expectations.

Various sensitivity analyses are provided. Firstly, sensitivity checks are presented to assess the robustness and reliability of the baseline results. Secondly, headline inflation is replaced by core inflation, because many policymakers emphasize the importance of this index, as it excludes volatile components of inflation such as fuel and food prices. Our estimates reveal that the elevated core inflation in Central European economies was caused predominantly by domestic factors.

The structure of the rest of this paper is as follows. Section 2 describes the data. Section 3 introduces the estimation strategy within the Bayesian SVAR model framework. Section 4 then presents the results and discusses the origins of inflation in Central European countries using historical decompositions. Robustness checks are introduced in Section 5 and Section 6 concludes.

## **2. Data**

The analysis involves the main domestic and foreign macroeconomic variables. The domestic variables include output, inflation, interest rates, and exchange rates, while the external environment is characterized by foreign output and inflation.

Domestic output is expressed in terms of GDP in constant local currency prices. Inflation is measured using national consumer price indices. Monetary conditions are approximated by the country's three-month nominal interest rate.<sup>6</sup> The nominal broad effective exchange rate (NEER), encompassing 64 countries, is used to measure the exchange rate. The NEER is preferred over the bilateral exchange rate because it is able to capture the change of currency in Slovakia, which became a member of the euro area in 2009.

Foreign output is expressed in real GDP. External inflation pressures are represented by foreign producer prices. Producer prices are used instead of consumer prices because, for industrially oriented small open economies, it is essential to know the prices at which they purchase production inputs and also the production prices at which they compete.<sup>7</sup> To characterize the external environment comprehensively, we include foreign output and prices for all countries in the European Union in effective terms. Effective indicators serve as proxies for the effects of foreign economic activity and inflation on each economy analysed. The weights used in the calculation are equal to the shares of the individual EU countries in the total exports of the given Central European economy to the EU.

All variables are transformed into quarter-on-quarter (QoQ) growth rates, with the exception of interest rates, which remain in levels.<sup>8</sup> Positive growth of the exchange rate means appreciation of the currency. Additionally, seasonal adjustment is applied to all variables except for interest rates and exchange rates. The dataset spans from 2000Q3 to 2023Q2. Domestic GDP, inflation, and interest rates were obtained from the FRED database, while foreign GDP and producer prices were sourced from the Eurostat database. The NEER is retrieved from the Bank for International Settlements, while the weights of trading partners were acquired from the World Bank.

---

<sup>6</sup> We use PRIBOR for Czechia, BUBOR for Hungary, WIBOR for Poland, and BRIBOR (until the end of 2008) and EURIBOR (from 2009) for Slovakia.

<sup>7</sup> Our approach is based on the core forecasting model of the Czech National Bank, which also primarily uses industrial prices as an indicator of inflationary pressures from the external environment (Andrle et al., 2009).

<sup>8</sup> The data are depicted in Appendix A.

### 3. Methodology

#### 3.1 Estimation Strategy

To discern the origins of inflation, we employ Bayesian Vector Autoregression (VAR), estimating separate models for each country.<sup>9</sup> By estimating separate models, we can address the heterogeneity among Central European economies. This includes adjusting the structural identification in the case of Slovakia, the only economy in our sample that is a member of the euro area and thus does not have its own monetary policy. Furthermore, the VAR model allows us to capture the dynamic relationships in small economies appropriately, even during turbulent times when one-off shocks to GDP growth after the outbreak of the COVID pandemic are not at the end of the sample. We illustrate this by means of a robustness analysis, comparing the estimates from the full sample with the pre-pandemic data up to 2019Q4.<sup>10</sup>

We assume four domestic shocks (demand, supply, monetary policy, and exchange rate) and two foreign shocks (demand and supply). The structural identification of the shocks relies on contemporaneous zero-sign restrictions (Arias et al., 2018). Following Brázdik and Franta (2017), Jovičić and Kunovac (2017), and Pop and Murarușu (2018), we also impose block exogeneity on the foreign variables, considering Central European countries as small open economies. This ensures that there will be no undesired spillover of domestic shocks to foreign variables; otherwise, there would be misspecification of shocks, as discussed in Cushman and Zha (1997) and Zha (1999). An additional advantage of this approach is a reduction in the number of parameters that need to be estimated (Cushman and Zha, 1997).

When estimating the Bayesian VAR, we use a normal diffuse prior, relying on uninformative beliefs about the error term covariance matrix. The model is estimated with two lags on demeaned data. Hence, it does not include a constant. This ensures a more appropriate and robust historical decomposition (Bergholt et al., 2024). The Gibbs algorithm is used to derive the unconditional posterior. For inference, 20,000 iterations of the Gibbs sampler are conducted, with the initial 10,000 iterations discarded as burn-in; the median is used for the analysis. The BEAR toolbox is used to estimate the model (Dieppe et al., 2016).

#### 3.2 Structural Identification of Shocks

The application of sign restrictions is motivated by economic theory. It is widely justified by previous empirical research and is implemented in the core forecasting models of central banks in Europe.<sup>11</sup> The structural identification of the shocks is presented in Table 1.

A positive domestic demand shock increases real output and prices, leading to a tightening of monetary policy and resulting in an appreciation of the exchange rate (Ellis et al., 2014; Forbes et al., 2018).<sup>12</sup> On the other hand, a negative supply shock leads to higher inflation and a decline in

---

<sup>9</sup> The model is described in Appendix B.

<sup>10</sup> Additionally, we explored the possibility of estimating the model with stochastic volatility. However, we dismissed this option, as it tends to attribute the inflation surge in the post-COVID period to an increase in stochastic volatility, rather than providing a structural interpretation.

<sup>11</sup> For instance, the Magyar Nemzeti Bank's forecasting model (Békési et al., 2016), the Bank of England's COMPASS (Burgess et al., 2013), the Czech National Bank's g3+ (Brázdik et al., 2020), and the Norges Bank's NEMO (Gerdrup et al., 2017).

<sup>12</sup> Despite the exchange rate appreciation that follows a domestic demand shock, inflation still rises. This is because of the assumption that the increase in prices resulting from stronger demand is more significant than the decrease in prices due to the appreciation and cheaper imports (Ellis et al., 2014; Forbes et al., 2018).



**Table 1: Structural Identification of Shocks**

<i>Variable\Shock</i>	Domestic Demand	Domestic Supply	Monetary Policy	Exchange Rate	Foreign Supply	Foreign Demand
Real Output	+	–	+	+		
Inflation	+	+	+	+		
Interest Rate	+		–	+		
Exchange Rate	+		–	–		
Foreign Output	<b>0</b>	<b>0</b>	<b>0</b>	<b>0</b>	–	+
Foreign Inflation	<b>0</b>	<b>0</b>	<b>0</b>	<b>0</b>	+	+

**Note:** A “+” (“–”) indicates that this variable must respond positively (negatively) to the particular shock. A “0” denotes block exogeneity. No sign ( ) implies that the variable is not expected to respond to the specific shock in any particular direction. A positive sign for the exchange rate indicates appreciation. For Slovakia, additional zero restrictions are assumed: it is assumed that there is no contemporaneous response of the interest rate to domestic supply and demand shocks. The structural identification for Slovakia is shown in Table B2.

output (Canova and De Nicolò, 2003). Monetary policy easing implies currency weakening, as the real return on investment is lower compared to the rest of the world. Easing in both components of monetary conditions contributes to higher inflation and stimulates real economic activity (Hjortsoe et al., 2016; Brázdik et al., 2020).

The depreciation sparks inflation pressures via an increase in import prices. Domestic production simultaneously becomes cheaper for foreign markets, leading to higher economic growth through an increase in exports. The central bank responds to the higher import prices and stronger demand pressures by raising the nominal interest rate. This partially offsets the initial effect of the currency weakening on prices (Audzei and Brázdik, 2018). Since we adopt block exogeneity, foreign variables do not respond to any domestic shock.

We opted for two adjustments to the above-mentioned sign restrictions in the case of Slovakia, which does not have an independent monetary policy after joining the euro area in 2009. We assume that the interest rate in Slovakia does not respond immediately to domestic demand and supply shocks due to the common monetary policy of the euro area. Therefore, contemporaneous zero restrictions are imposed in these cases.<sup>13</sup>

The foreign shocks are identified in a straightforward way. A positive foreign demand shock increases both foreign output and prices. On the other hand, the higher inflation in the case of a negative supply shock is accompanied by a decline in output. This identification of foreign shocks is sufficient to obtain economically intuitive responses for the small open economies considered. Their output grows and inflation increases in the case of positive foreign demand shocks, while negative foreign supply shocks lead to economic slack with higher inflation. The central bank reacts to higher prices by tightening monetary policy, especially under a positive foreign demand shock.

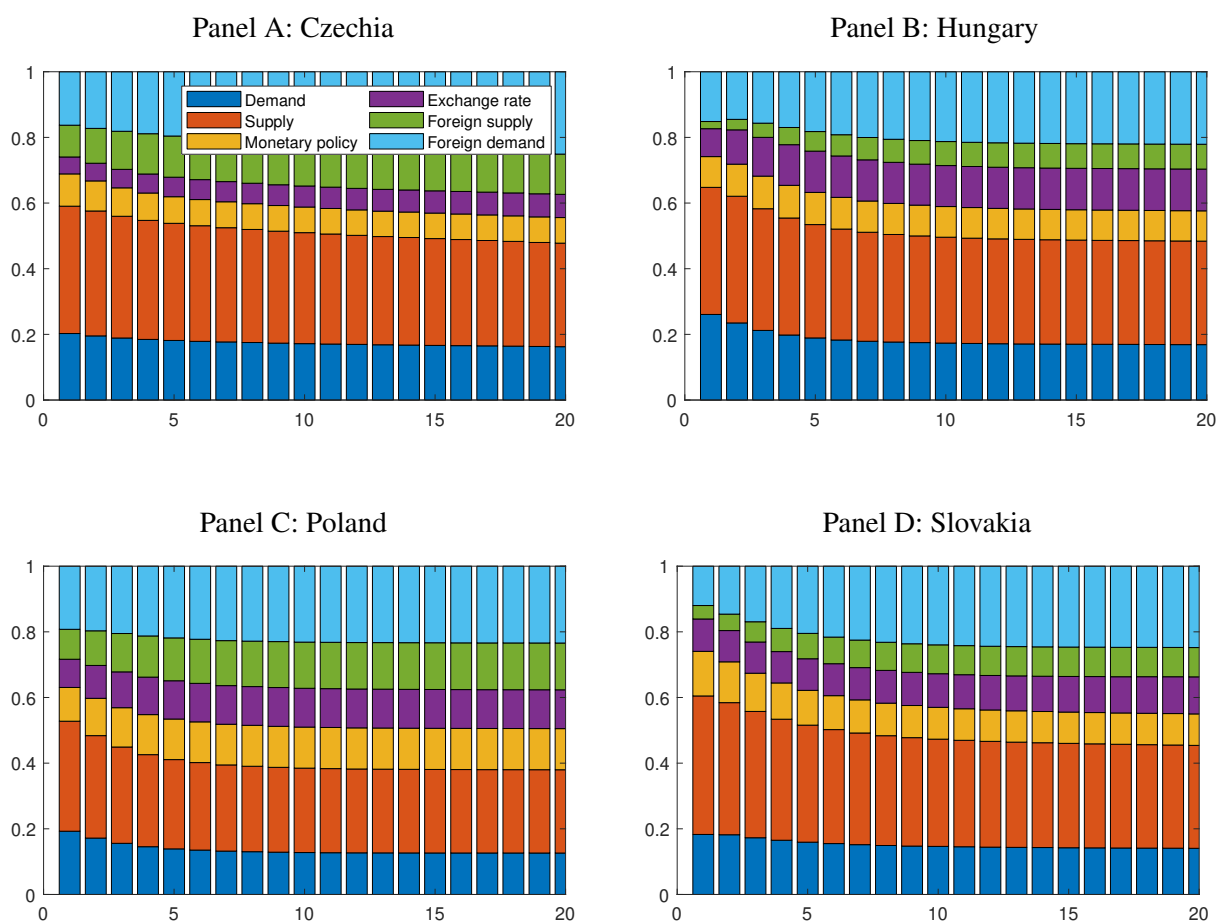
<sup>13</sup> The structural identification of the shocks for Slovakia is illustrated in Table B2.

## 4. Results

### 4.1 Drivers of Inflation Variability

Although Central European countries are small open economies, domestic shocks, especially supply shocks, dominate the variability of the inflation shocks between 2000Q3 and 2023Q2 (Figure 3).<sup>14</sup> This suggests that their inflation developments are not necessarily related to what is happening in the wider world. Foreign shocks—primarily foreign demand shocks—explain only around one-third of the variability in quarter-on-quarter inflation after five years across all four countries. Foreign supply shocks play a relatively minor role in Hungary and Slovakia.

**Figure 3: Forecast Error Variance Decompositions of CPI Inflation**



**Note:** The x-axis denotes quarters; the y-axis represents the share of the shocks in the variability.

The presence of domestic supply shocks, which account for more than one-fifth of the variation in inflation, not only captures the common variability in supply, but also reflects the real and price convergence of Central European countries towards Western economies.<sup>15</sup> The relevance of

<sup>14</sup> The properties of the models estimated are provided in Appendix C. In particular, a full overview of the impulse responses for all countries is reported in Section C.1. The complete set of forecast error variance decompositions can be found in Section C.2.

<sup>15</sup> While, on the one hand, faster technological progress and expansion of the production frontier (such as accession to the EU) dampen inflation in converging economies, price convergence—depicted by the Balassa–Samuelson

domestic demand shocks to inflation is lower; they explain about 15% of the variability in inflation. The role of exchange rate shocks varies to some extent across countries. Their contribution to inflation is negligible in the Czech economy, confirming the findings of Baxa and Šestořád (2019), who observed a rather low exchange rate pass-through to inflation. Conversely, exchange rate shocks are a considerable factor behind the evolution of inflation in Hungary, aligning with the observations of Cohn-Bech et al. (2023), who suggest an increasing exchange rate pass-through to inflation for Hungary. Monetary policy shocks play a relatively minor role across economies, plausibly indicating that monetary policy affects inflation mainly through its systematic component.

## **4.2 Factors Behind of Post-COVID Inflation**

Figure 4 shows the contributions of the shocks identified to headline inflation from the beginning of 2018 until mid-2023.<sup>16</sup> Both foreign demand and foreign supply shocks contribute significantly to inflation in 2021 and 2022,<sup>17</sup> aligning with findings for the euro area (Ascari et al., 2023; Eickmeier and Hofmann, 2022; Gonçalves and Koester, 2022). Foreign demand shocks contribute to inflation more than foreign supply shocks do in the case of Hungary and Slovakia, while the impact of both foreign shocks on inflation is similar in Czechia and Poland. The inflationary effect of foreign shocks faded out in 2023 as energy prices started to decline and the bottlenecks in global value chains eased partially in a situation of satisfied deferred demand. However, it is the domestic dimension that primarily accounts for the variation in inflation rates across countries, consistent with Binici et al. (2022). The influence of domestic factors is particularly pronounced in Czechia and Hungary, smaller in Poland, and only minor in Slovakia.

In terms of domestic factors, supply shocks have contributed the most to headline inflation across all countries since 2022. The presence of these shocks is in line with sluggish economic growth amid an overheating labour market. Although GDP declined during both the pandemic and the energy crisis, these downturns were not reflected in the labour market. There was a notable increase in unemployment rates from 2020Q1 to 2020Q2 across all four countries (OECD). However, the increase was short-lived and was not followed by a gradual labour market cooling. Consequently, a relatively stable number of workers produced less output, resulting in reduced labour productivity and increased unit cost of labour for firms. Our interpretation is confirmed by Figure 5, which demonstrates that nominal unit labour cost (based on hours worked) markedly exceeded real labour productivity per hour worked. This pattern is visible in Czechia, Hungary, and Poland.<sup>18</sup> Conversely, the labour cost-to-productivity ratio increased later and much less in Slovakia; it is even below the EU average.<sup>19</sup> This is consistent with the identified less pronounced contributions of negative supply shocks to inflation since 2022, when the ratio increased.

---

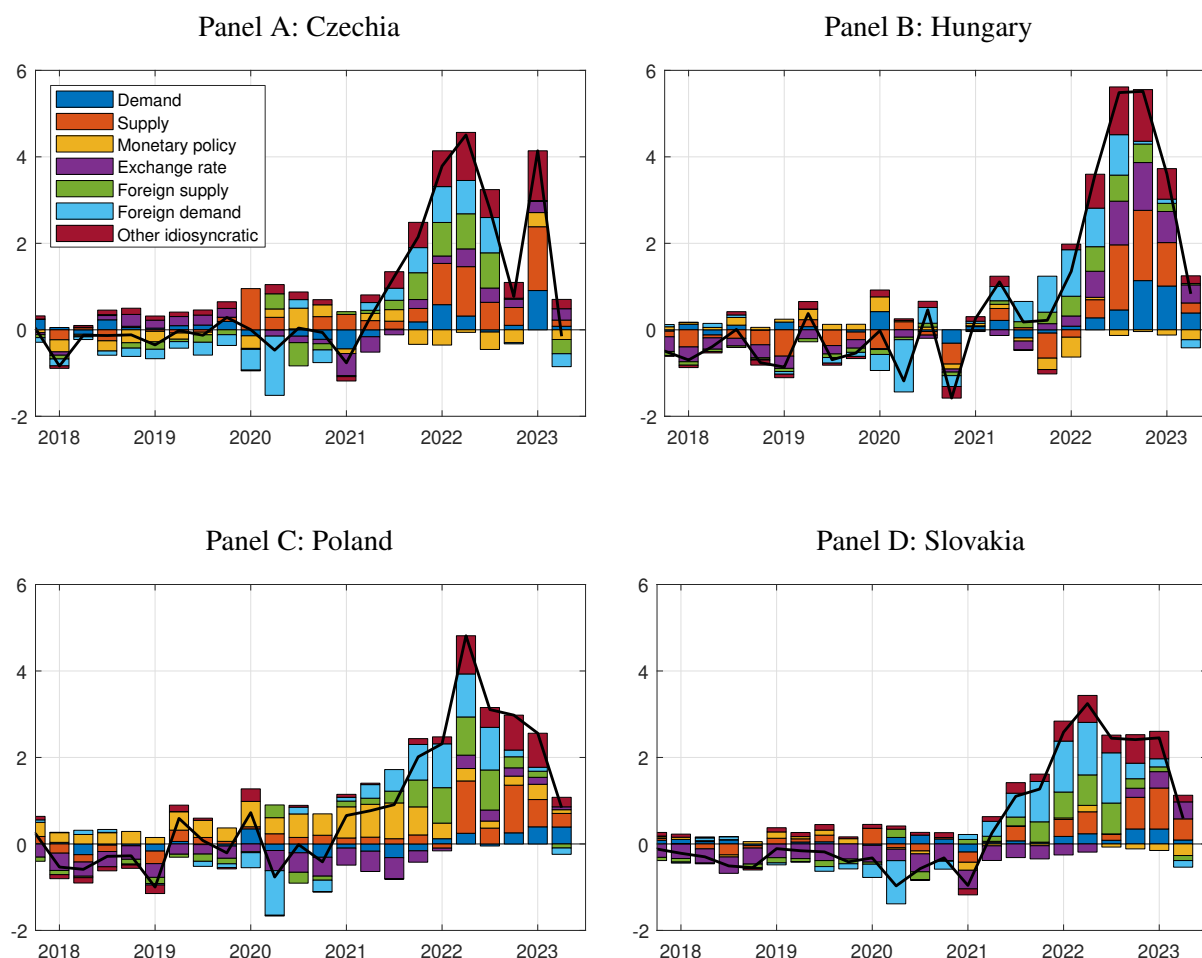
effect—conversely leads to a faster increase in prices of nontradable goods and services. Incomplete price and wage level convergence across all countries is highlighted by Arnoštová et al. (2023). Concerning the price levels of GDP, Czechia and Slovakia stood at around 80% and Hungary and Poland at around 60% of the euro area average as of 2022. Wage levels in euro terms are below 60% of the euro area average across all four countries, the lowest being around 35% in Hungary.

<sup>16</sup> We demonstrate in Section C.3 in the Appendix that the estimated models accurately capture major historical events through historical decompositions for all the countries considered.

<sup>17</sup> The negative foreign supply and positive foreign demand shocks identified are large from a historical perspective and clearly statistically significant at the 68% level of significance for many consecutive quarters.

<sup>18</sup> Our results are in line with Szafranek et al. (2024), who also find a significant contribution of domestic supply shocks to inflation in Poland in 2021 and 2022.

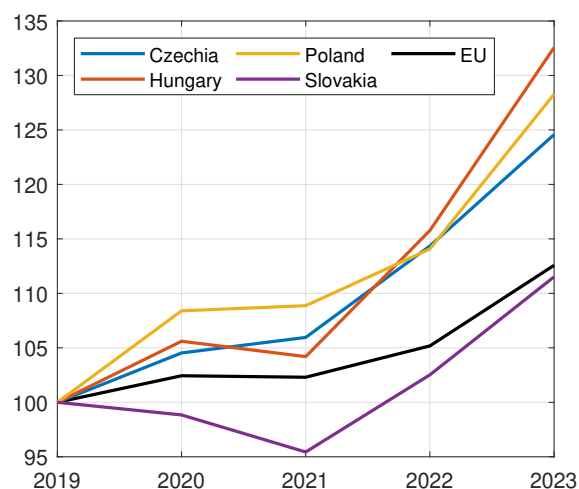
<sup>19</sup> This aligns with the observation that during 2022, Slovakia maintained an unemployment rate of approximately 6%, whereas in the other countries, it remained at around 2–4%. Hence, the labour market was tighter in those countries.

**Figure 4: Historical Decomposition of CPI Inflation (2018Q1–2023Q2)**

**Note:** Contribution of shocks to the quarter-on-quarter change in the CPI index, in percentage points. Deviations from the mean and from the contribution of the initial conditions.

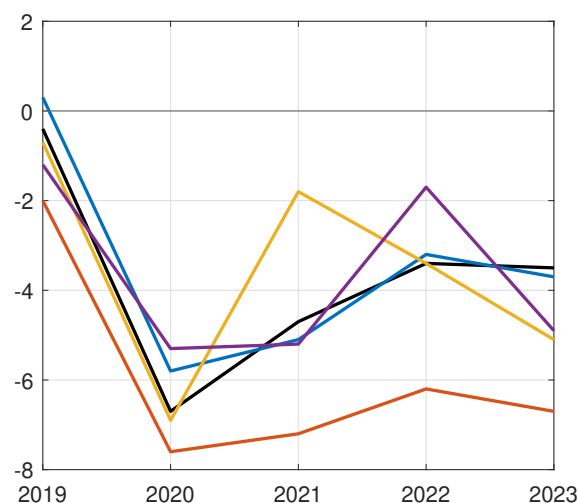
The post-pandemic recovery is evidenced by a positive contribution of domestic demand shocks, suggestive of deferred consumption. We also assume that the impact of government spending shocks manifests as demand shocks, particularly given their frequent realization in the form of transfers, social benefits for households, and reductions in labour-income tax. However, the role of domestic demand in explaining the recent spikes across countries seems relatively limited. This implies that neither saving by households during the closures of some parts of economies, nor the COVID-19 fiscal stimulus, was the primary driver of the inflation surge across countries. The exception is Hungary, where a greater role of demand shocks has been observed since the latter half of 2022. This is consistent with the additional round of fiscal stimulus implemented ahead of the April 2022 elections (Lybek, 2023). Furthermore, Cohn-Bech et al. (2023) elaborate that this fiscal stimulus was provided despite a stronger-than-expected economic recovery from the COVID-19 crisis. Large fiscal expansion in Hungary is also evident from the general government deficit as a percentage of GDP (see Figure 6). While other Central European countries managed to reduce their deficits following the first wave of the pandemic and are around the EU average, the Hungarian government has consistently maintained a substantial deficit since 2020.

**Figure 5: Labour Cost-to-Productivity Ratio (index, 2019 = 100)**



**Note:** The ratio is calculated as the ratio of nominal unit labour cost based on hours worked to real labour productivity per hour worked. Both indices are normalized to 100 in 2019. The data are obtained from Eurostat.

**Figure 6: General Government Surplus/Deficit (percentage of GDP)**



**Note:** Net lending (+)/net borrowing (-). The data are obtained from Eurostat.

Appreciation exchange rate shocks are identified after the outbreak of the pandemic, due to the government support swiftly provided to economies across Europe, which resulted in relatively positive sentiment.<sup>20,21</sup> However, after Russia's invasion of Ukraine in February 2022, there was a sudden depreciation not only of Central European currencies, but also of the euro. This was caused by negative sentiment in financial markets towards Europe, which faced an unexpected security threat and a sharp increase in energy prices affecting its competitiveness with the rest of the world. In 2022, depreciation exchange rate shocks thus contributed slightly to inflation in Central European economies.<sup>22</sup> In Hungary, the impact of exchange rate shocks may have been more pronounced due to a high public deficit relative to GDP. According to Cohn-Bech et al. (2023), during 2022, the forint depreciated against the US dollar by more than most emerging markets' currencies globally. Moreover, disputes with the European Union added to risk perceptions and intensified pressure on the exchange rate.<sup>23</sup>

The impact of monetary policy shocks has been relatively low across countries since 2022. Restrictive monetary policy shocks have partially mitigated the high inflation in Czechia since the end of 2021. In the case of Poland, despite accommodative monetary policy until 2021, the subsequent significant increase in interest rates minimized the inflationary effects of policy shocks.

<sup>20</sup> Positive sentiment on the financial market implies an inflow of foreign capital into Central European currencies. The opposite holds for a risk-off regime.

<sup>21</sup> In Hungary and Poland, the exchange rate was temporarily supported by central bank interventions to mitigate the immediate impact of the pandemic outbreak.

<sup>22</sup> Although the central banks in Czechia, Hungary, and Poland intervened to mitigate the depreciation pressure in 2022, depreciation shocks were still identified.

<sup>23</sup> The Hungarian Central Bank responded to the sharp depreciation of the forint by increasing the interest rate to 13% per annum, significantly higher than that of other central banks in the region. On top of that, the three-month interbank rate increased to 17% because of other Hungarian monetary policy tools.

Similarly, the influence of monetary policy shocks on inflation was negligible in Hungary and Slovakia. This suggests that central banks behaved mostly in accordance with the economic relationships estimated by the policy rule. A similar explanation is provided by Banbura et al. (2023) for the eurozone. This finding is driven by the relatively large importance of adverse supply shocks that emerged after the outbreak of the COVID-19 pandemic. According to the obtained impulse response functions (available in Appendix C.1), the reaction of central banks is more relaxed in the case of supply shocks compared to demand shocks, especially for foreign shocks.<sup>24</sup> However, central banks have not implemented excessively restrictive policies that could counteract other shocks.

The historical decompositions also indicate that following the pandemic, inflation increased beyond what can be accounted for by the shocks identified, attributed to idiosyncratic components. One plausible explanation could be that some relevant shocks are not identified, for example, prevailing higher inflation expectations in the economies. As also mentioned by Banbura et al. (2023), the unexplained part can reflect measurement errors or changes in collection methodology. It could also be related to the presence of non-linearities in transmission during abnormal times, with larger shocks being transmitted more strongly and/or more quickly (Cavallo et al., 2023). In any case, the presence of idiosyncratic components confirms the abnormal nature of the episode.

### **4.3 Synchronization of Shocks Across Countries**

Although the economies considered are similar in many respects, there are sizeable differences in the structural shocks identified, as is evident from Table 2, which shows the cross-country correlations of the structural shocks of 2020Q1 and 2023Q2.<sup>25</sup> While the foreign shocks are almost identical due to similarity in the composition of main trading partners, the correlation of the domestic shocks remains mostly positive but considerably smaller. In particular, domestic demand and supply shocks are synchronized between Czechia and Slovakia, which formed one country in the past. Exchange rate shocks are synchronized across Czechia, Hungary, and Poland because these economies are perceived as similar on the world financial market. However, exchange rate shocks are identified differently in Slovakia than in the other countries, as Slovakia has been a member of the euro area since 2009.

---

<sup>24</sup> When a supply shock occurs, policymakers face a trade-off between stabilizing inflation and real economic activity, which is often considered the second mandate of the central bank. On the other hand, offsetting inflation pressures from demand shocks is easier for the central bank without additional costs, as deviations in both inflation and output growth are addressed simultaneously.

<sup>25</sup> Although some of the correlation coefficients are not statistically significant due to the short period of interest, the main patterns of (un)synchronization of shocks across countries are obvious and mostly consistent with the correlations obtained for the full sample, as reported in Table C1 in the Appendix. In a nutshell, for the overall dataset, the synchronization of foreign shocks is high, whereas the correlation of domestic shocks is much lower, with only two occurrences where the correlation coefficient exceeds one-half. The first occurrence is the correlation of domestic demand shocks between Czechia and Slovakia, and the second is the correlation of exchange rate shocks between Hungary and Poland.

**Table 2: Correlation of Structural Shocks Across Countries (2020Q1–2023Q2)**

Domestic Demand				Domestic Supply				
Czechia	Hungary	Poland	Slovakia	Czechia	Hungary	Poland	Slovakia	
1	0.109	0.228	0.560	Czechia	1	-0.085	0.047	0.552
	1	0.688	0.119	Hungary		1	0.166	-0.096
		1	-0.055	Poland			1	0.250
			1	Slovakia				1

Monetary Policy				Exchange Rate				
Czechia	Hungary	Poland	Slovakia	Czechia	Hungary	Poland	Slovakia	
1	0.100	0.304	0.357	Czechia	1	0.471	0.610	0.200
	1	0.385	0.240	Hungary		1	0.581	0.060
		1	-0.056	Poland			1	-0.046
			1	Slovakia				1

Foreign Supply				Foreign Demand				
Czechia	Hungary	Poland	Slovakia	Czechia	Hungary	Poland	Slovakia	
1	0.986	0.995	0.992	Czechia	1	0.990	0.996	0.992
	1	0.994	0.992	Hungary		1	0.995	0.993
		1	0.995	Poland			1	0.996
			1	Slovakia				1

**Note:** Structural shocks across countries are compared from 2020Q1 to 2023Q2. The correlations are based on the median of the shock's posterior distribution.

## 5. Sensitivity Analysis

We perform various sensitivity analyses to assess the robustness and reliability of our results. Firstly, we compare our baseline estimates with the pre-pandemic sample to demonstrate the robustness of our approach. Secondly, we show the robustness of our results through a more detailed structural identification of shocks in the case of Poland. Additionally, a historical decomposition estimation for core CPI instead of headline CPI is conducted, as focusing on the most stable component of inflation is appealing to some policymakers during extreme times. Furthermore, we demonstrate through additional estimations on the Czech example how the results change when we adjust CPI for administrative changes. Moreover, we estimate the baseline model with three and four lags instead of two, concluding that there is no notable difference in the results compared to our baseline.

### 5.1 Comparison Across Different Estimation Samples

The baseline model is re-estimated using the pre-pandemic sample until 2019Q4. The main reason is to investigate whether our approach is affected by excluding more recent observations from the abnormal period of COVID-19 onwards. The results are broadly consistent with the baseline estimations, with major historical events still adequately captured for all the economies considered

(see Appendix D.3). For clarity, we calculate the correlation coefficient for the structural shocks in the period 2001Q1–2019Q4. Table 3 shows that the correlation is consistently high, typically exceeding 90%. This confirms the reliability of the model in extreme times as well as the baseline results.

**Table 3: Correlation of Structural Shocks Across Samples**

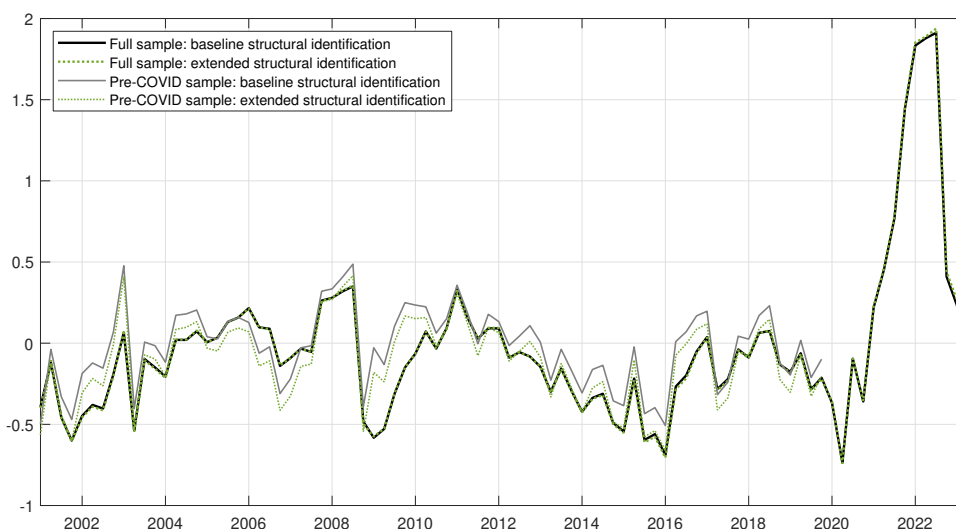
<i>Shock\Country</i>	Czechia	Hungary	Poland	Slovakia
Domestic Demand	0.972	0.977	0.976	0.987
Domestic Supply	0.940	0.895	0.913	0.983
Monetary Policy	0.895	0.936	0.899	0.984
Exchange Rate	0.915	0.938	0.928	0.925
Foreign Supply	0.932	0.923	0.907	0.879
Foreign Demand	0.937	0.945	0.935	0.890

**Note:** Structural shocks for baseline estimation and the pre-COVID sensitivity check are compared for the period 2001Q1–2019Q4. The correlations are based on the median of the shock’s posterior distribution.

## 5.2 Alternative Structural Identification of Foreign Shocks: The Case of Poland

While the interpretation of the historical data remains largely consistent between the baseline and pre-COVID estimations, it is important to acknowledge notable differences in the impulse responses in the case of Poland. Specifically, when focusing solely on the pre-COVID sample, the reactions of Polish output growth to foreign shocks appear negligible and lack statistical significance at the 68% confidence level. Consequently, we propose an alternative approach employing a more elaborate structural identification of foreign shocks. This sensitivity check is

**Figure 7: Contribution of Foreign Shocks to Inflation in Poland**



**Note:** Contribution of foreign shocks to the quarter-on-quarter change in the CPI index, in percentage points.



conducted on the example of Poland, since the impulse responses to foreign shocks are broadly intact for other countries when the model is estimated on the pre-COVID sample. Therefore, on top of the baseline identification, contemporaneous sign restrictions are imposed on Polish GDP growth and CPI inflation. Specifically, we assume that domestic GDP growth will decrease while inflation will rise in response to a negative foreign supply shock. Conversely, in the case of a positive foreign demand shock, we expect both GDP growth and inflation to increase.

In the case of the models estimated on the full sample, the contribution of foreign shocks to inflation for both the baseline and extended structural identifications remains intact (Figure 7). Although some differences are visible when comparing estimations for the baseline and alternative structural identifications on the pre-COVID sample, they still tell a similar story about the effects of foreign shocks on inflation in Poland. Therefore, we can conclude that the baseline specification is appropriate for our analysis, especially when focusing on the interpretation of the full sample including the post-pandemic surge in inflation.

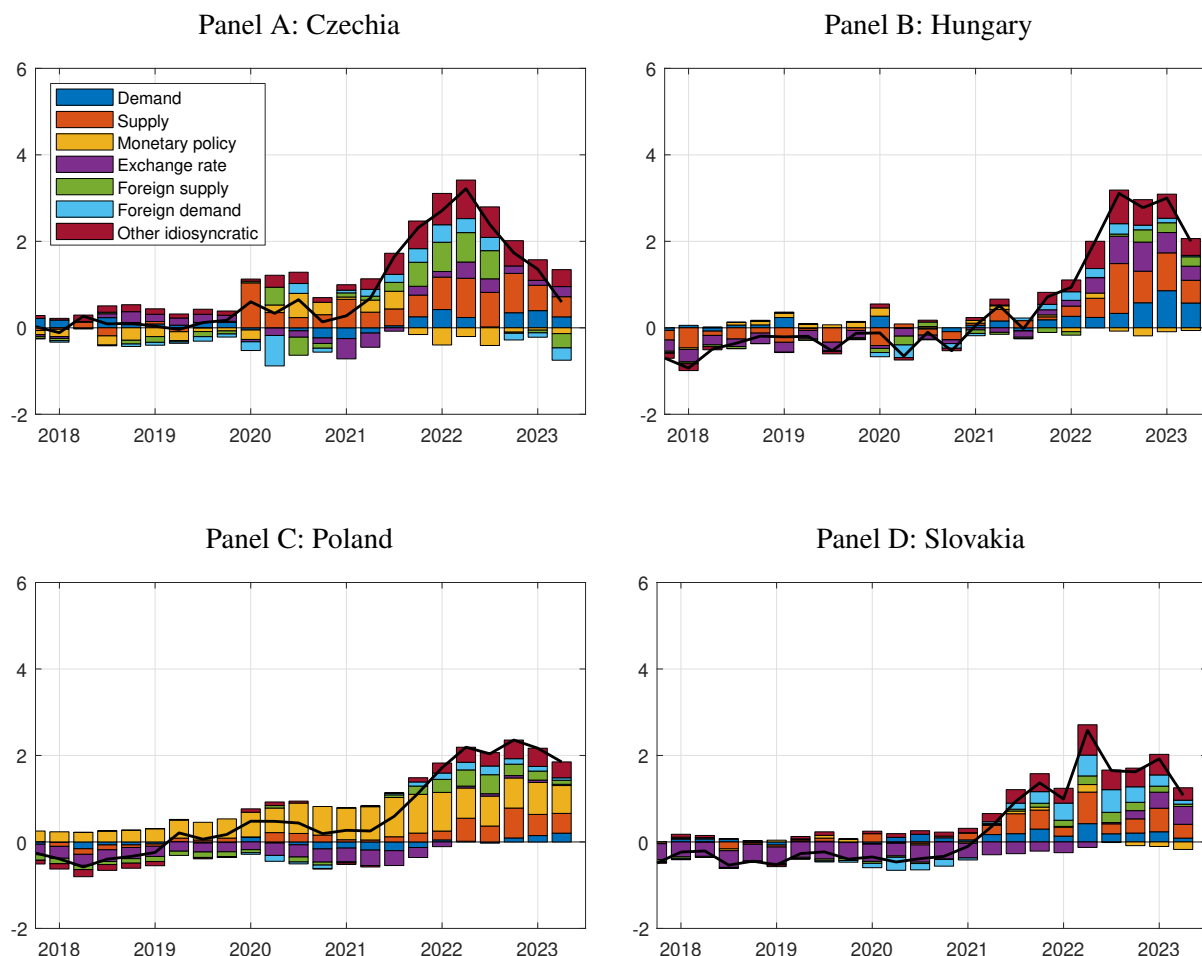
### **5.3 Core Inflation Instead of CPI Inflation**

Many policymakers emphasize the importance of achieving price stability in core inflation, because core inflation excludes volatile components such as energy and food prices.<sup>26</sup> Hence, we replace headline inflation with core inflation.

Comparing the results (Figure 8) with the baseline estimation (Figure 4), it is evident that the elevated core inflation is driven primarily by domestic factors across countries, with the impact of foreign shocks being considerably weaker. However, in the case of Czechia, there are still notable contributions from both foreign shocks. In Slovakia, the foreign impact is mostly from the demand side, whereas in Poland, it stems from the supply side to a limited extent. On the other hand, Hungary's core inflation is mostly driven by domestic factors. This is consistent with the fact that it faced the highest inflation rates among the countries in the region. With the exception of Poland, the relevance of the individual domestic factors remains similar to the baseline model results. Domestic supply shocks are still the primary contributor across the economies, with depreciation shocks being pronounced in Hungary. The impact of policy shocks as a factor behind core inflation is stronger in Poland. The National Bank of Poland started to hike rates later than its counterparts in Czechia and Hungary, even though core inflation was already elevated in Poland in 2020. The previously accommodative monetary policy, together with its relatively large impact on inflation variability, explains the positive contributions of policy shocks in the decomposition of core inflation.

---

<sup>26</sup> At first, policymakers justified the interest rate hike at the onset of the inflation spike by citing core inflation. In April 2022, ECB Governor Christine Lagarde mentioned the level of core inflation and emphasized a data-dependent approach regarding future rate hikes. Similarly, in February 2023, CNB Deputy Governor Eva Zamrazilová pointed to the core component of inflation to justify her readiness to vote in favour of raising interest rates in the future. Since the period of inflation spikes, policymakers have adopted a cautious approach to monetary policy easing, citing elevated or persistent levels of core inflation. In February 2024, CNB Governor Aleš Michl advocated maintaining a hawkish stance amid continued high core inflation, while in April 2024 the NBP Council members kept the interest rate unchanged, also mentioning elevated core inflation. Similarly, Federal Reserve Governor Christopher J. Waller emphasized caution in his speech titled "There's Still No Rush" in May 2024.

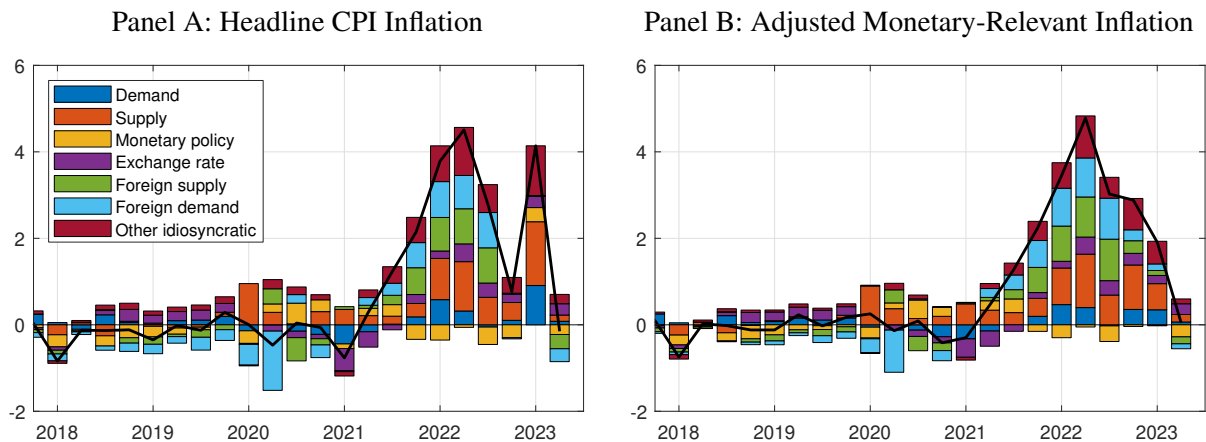
**Figure 8: Historical Decomposition of Core Inflation (2018Q1–2023Q2)**

**Note:** Contribution of shocks to the quarter-on-quarter change in the core component of the CPI index, in percentage points. Deviations from the mean and from the contribution of the initial conditions. The y-axis has the same range as Figure 4 for ease of comparison with the decomposition of CPI inflation.

#### 5.4 Impact of Administrative Changes on the Origins of Inflation in Czechia

As we mentioned during the discussion of the baseline results, the estimates are influenced to some extent by other factors than solely structural shocks. One of them is the introduction of various government measures across countries, which, at least temporarily, reduced consumer inflation in 2022 and 2023 and hence partially offset the sharp decline in real household income. This effect is most obvious in the case of Czechia. In the fourth quarter of 2022, inflation declined rapidly due to a waiver of the fee for renewable energy sources and the introduction of an energy savings tariff, while in the first quarter of 2023, it spiked following the replacement of the tariff with a government cap on electricity prices. However, the cap had a very limited impact on inflation in Czechia, since it was set above the actual prices of most energy providers for households.<sup>27</sup> Therefore, we provide a sensitivity analysis where we replace CPI inflation with monetary policy-relevant inflation (which

<sup>27</sup> Various measures were also introduced in other countries. The Slovak government decided to cap energy prices for companies and businesses and reduce VAT on selected goods and services. Similarly, the Polish government introduced an Anti-Inflationary Shield and an Energy Shield in 2022, including measures such as fixed prices for

**Figure 9: Sensitivity of Historical Decomposition to Administrative Changes (2018Q1–2023Q2)**

**Note:** Contribution of shocks to the quarter-on-quarter change in the adjusted monetary-relevant price index, in percentage points. Deviations from the mean and from the contribution of the initial conditions.

disregards the primary impacts of changes to indirect taxes) further adjusted for the effects of the energy savings tariff and the waiver of the fee for renewable energy sources.

Although the evolution of adjusted monetary policy-relevant inflation is smoother than that of CPI inflation, the main drivers identified remain the same (Figure 9). In late 2022 and early 2023, the contribution of domestic supply shocks prevails, while the effects of previous foreign shocks are already fading (Panel B in Figure 9). Hence, the interpretation of adjusted monetary policy-relevant inflation closely aligns with the baseline results, implying that administrative changes have no significant impact on the structural explanation of inflation.

## 6. Conclusion

This paper examines the factors driving the surge in inflation in Central European countries, specifically Czechia, Hungary, Poland, and Slovakia, following the COVID-19 pandemic and Russia's aggression against Ukraine. The contribution of the paper is twofold. Firstly, it expands our understanding of the elevated inflation in Central European economies, which are typical examples of small open economies. Moreover, these economies were among the most affected by the energy crisis, due to their proximity to Russia and high energy intensity. Secondly, the paper offers a comparison of the impact of monetary policy on inflation between economies with independent monetary policies and those within the euro area.

We employ a Bayesian SVAR model to depict the economic relationships in the small open economies considered. The structural identification relies on contemporaneous sign and zero restrictions, supplemented by block exogeneity to account for the characteristics of small open economies. The origins of inflation are investigated through a historical decomposition.

---

electricity and VAT reductions on various products and fuels. Energy price caps were also introduced in Hungary. For a comprehensive list of measures, refer to the [Bruegel Datasets](#).

Our analysis reveals that foreign shocks play a significant role in explaining the heightened post-2020 inflation, alongside noteworthy contributions from domestic factors. In particular, domestic supply shocks emerge as a considerable driver, indicating constraints on the production side. These findings are consistent across the countries examined. Furthermore, while the exchange rate shock significantly stimulates inflation in Hungary only, monetary policy shocks appear to be relatively negligible in all the countries. This suggests that the central banks respond to increases in inflation in accordance with their reaction functions. Interestingly, this pattern persists across economies with independent monetary policies and for Slovakia, a member of the euro area. Thus, central banks have avoided additional tightening measures, which could have mitigated inflation through monetary policy shocks.

Our conclusions are robust to various sensitivity analyses. We demonstrate the robustness of our approach under extreme events such as the pandemic period. Additionally, we show that when headline inflation is replaced by core inflation, domestic factors primarily drive inflation.

While we have identified the main determinants of inflation, a portion of the inflationary developments remains unexplained by our model, despite the incorporation of standard macroeconomic relationships. This prompts us to consider whether elevated inflation expectations could have played a role in the high inflation observed in Central European economies. However, exploring this topic falls outside the scope of our current paper and could be addressed in future research endeavours.

## References

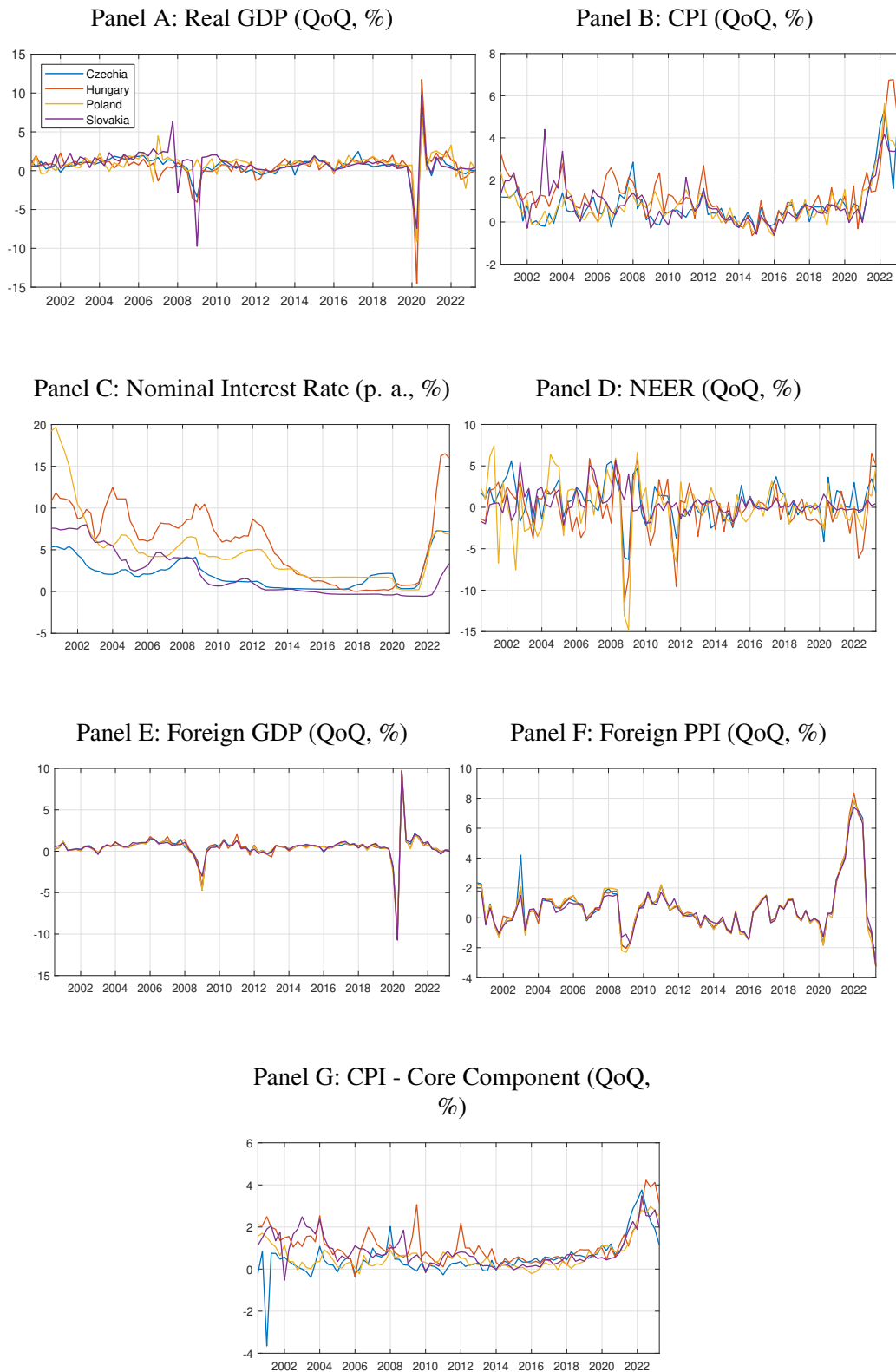
- ANDRLE, M., T. HLÉDIK, O. KAMENÍK, AND J. VLČEK (2009): “Implementing the New Structural Model of the Czech National Bank.” Working Paper Series 2/2009, Czech National Bank
- ARCE, Ó., M. CICCARELLI, A. KORNPORST, AND C. MONTES-GALDÓN (2024): “What Caused the Euro Area Post-Pandemic Inflation?” Occasional Paper Series No. 2024/343, European Central Bank
- ARIAS, J. E., J. F. RUBIO-RAMÍREZ, AND D. F. WAGGONER (2018): “Inference Based on Structural Vector Autoregressions Identified with Sign and Zero Restrictions: Theory and Applications.” *Econometrica*, 86(2):685–720.
- ARNOŠTOVÁ, K., O. BABECKÁ KUCHARČUKOVÁ, J. BABECKÝ, M. BENDA, S. BENECKÁ, J. BRŮHA, K. GALUŠČÁK, J. GROSSMANN, E. HROMÁDKOVÁ, L. KOMÁREK, Z. KOMÁRKOVÁ, J. KRÁL, P. KRÁL, I. KUBICOVÁ, V. MOLNÁR, M. MOTL, F. NOVOTNÝ, R. PAŠALIČOVÁ, L. PFEIFER, M. RYŠAVÁ, B. SAXA, M. SOUČEK, M. SZABO, M. ŠARBOCH, R. ŠTIKOVÁ, J. ŠVÉDA, AND M. VOJTA (2023): “Analyses of the Czech Republic’s Current Economic Alignment with the Euro Area 2023.” Alignment Analyses, Czech National Bank
- ASCARI, G., P. BONOMOLO, M. HOEBERICHTS, AND R. TREZZI (2023): “The Euro Area Great Inflation Surge.” DNB Analysis, De Nederlandsche Bank
- ASCARI, G., D. BONAM, AND A. SMADU (2024): “Global Supply Chain Pressures, Inflation, and Implications for Monetary Policy.” *Journal of International Money and Finance*, 142: 103029.
- AUDZEI, V. AND F. BRÁZDIK (2018): “Exchange Rate Dynamics and Their Effect on Macroeconomic Volatility in Selected CEE Countries.” *Economic Systems*, 42(4):584–596.
- BABECKÁ KUCHARČUKOVÁ, O., J. BRŮHA, P. KRÁL, M. MOTL, AND J. TONNER (2022): “Assessment of the Nature of the Pandemic Shock: Implications for Monetary Policy.” Research and Policy Notes 1/2022, Czech National Bank
- BALL, L. M., D. LEIGH, AND P. MISHRA (2022): “Understanding US Inflation During the COVID-19 Era.” NBER Working Paper 30613, National Bureau of Economic Research
- BANBURA, M., E. BOBEICA, AND C. M. HERNÁNDEZ (2023): “What Drives Core Inflation? The Role of Supply Shocks.” Working Paper Series, European Central Bank
- BAXA, J. AND T. ŠESTOŘÁD (2019): “The Czech Exchange Rate Floor: Depreciation without Inflation?” IES Working Paper, Charles University
- BEAUDRY, P., C. HOU, AND F. PORTIER (2024): “The Dominant Role of Expectations and Broad-Based Supply Shocks in Driving Inflation.” Discussion Paper 18963, CEPR
- BÉKÉSI, L., C. KÖBER, H. KUCSERA, T. VÁRNAI, AND B. VILÁGI (2016): “The Macroeconomic Forecasting Model of the MNB.” MNB Working Papers, Magyar Nemzeti Bank
- BERGHOLT, D., F. CANOVA, F. FURLANETTO, N. MAFFEI-FACCIOLI, AND P. ULVEDAL (2024): “What Drives the Recent Surge in Inflation? The Historical Decomposition Rollercoaster.” Working Paper, Norges Bank

- BERNANKE, B. AND O. BLANCHARD (2023): “What Caused the U.S. Pandemic-Era Inflation?” Hutchins Center Working Paper 23-4, Brookings Institution
- BINICI, M., S. CENTORRINO, M. S. CEVIK, AND G. GWON (2022): “Here Comes the Change: The Role of Global and Domestic Factors in Post-Pandemic Inflation in Europe.” IMF Working Papers 2022-2241, International Monetary Fund
- BRÁZDIK, F. AND M. FRANTA (2017): “A BVAR Model for Forecasting of Czech Inflation.” Working Paper Series, Czech National Bank
- BRÁZDIK, F., T. HLÉDIK, Z. HUMPLOVÁ, I. MARTONOSI, K. MUSIL, J. RYŠÁNEK, T. ŠESTOŘÁD, J. TONNER, S. TVRZ, AND J. ŽÁČEK (2020): “The g3+ Model: An Upgrade of the Czech National Bank’s Core Forecasting Framework.” Working Paper Series 7/2020, Czech National Bank
- BURGESS, S., E. FERNANDEZ-CORUGEDO, C. GROTH, R. HARRISON, F. MONTI, K. THEODORIDIS, M. WALDRON, ET AL. (2013): “The Bank of England’s Forecasting Platform: COMPASS, MAPS, EASE and the Suite of Models.” Working Paper No. 471, Bank of England
- CANOVA, F. AND G. DE NICOLÒ (2003): “On the Sources of Business Cycles in the G-7.” *Journal of International Economics*, 59(1):77–100.
- CASELLI, F. G. AND A. ROITMAN (2019): “Nonlinear Exchange-Rate Pass-Through in Emerging Markets.” *International Finance*, 22(3):279–306.
- CAVALLO, A., F. LIPPI, AND K. MIYAHARA (2023): “Inflation and Misallocation in New Keynesian Models.” ECB Forum on Central Banking, Sintra, European Central Bank
- COHN-BECH, E., K. FODA, AND A. ROITMAN (2023): “Drivers of Inflation: Hungary.” Selected Issues Papers 004, International Monetary Fund
- CUSHMAN, D. O. AND T. ZHA (1997): “Identifying Monetary Policy in a Small Open Economy under Flexible Exchange Rates.” *Journal of Monetary economics*, 39(3):433–448.
- DI GIOVANNI, J., Ş. KALEMLI-ÖZCAN, A. SILVA, AND M. A. YILDIRIM (2022): “Global Supply Chain Pressures, International Trade, and Inflation.” NBER Working Paper 30240, National Bureau of Economic Research
- DI GIOVANNI, J., Ş. KALEMLI-ÖZCAN, A. SILVA, AND M. A. YILDIRIM (2023): “Quantifying the Inflationary Impact of Fiscal Stimulus under Supply Constraints.” NBER Working Paper 30892, National Bureau of Economic Research
- DIEPPE, A., R. LEGRAND, AND B. VAN ROYE (2016): “The BEAR Toolbox.” Working Paper Series, European Central Bank
- EICKMEIER, S. AND B. HOFMANN (2022): “What Drives Inflation? Disentangling Demand and Supply Factors.” *BIS Working Papers*, 1047.
- ELLIS, C., H. MUMTAZ, AND P. ZABCZYK (2014): “What Lies Beneath? A Time-Varying FAVAR Model for the UK Transmission Mechanism.” *The Economic Journal*, 124(576): 668–699.
- FORBES, K., I. HJORTSOE, AND T. NENOVA (2018): “The Shocks Matter: Improving Our Estimates of Exchange Rate Pass-Through.” *Journal of international economics*, 114:255–275.

- GAGLIARDONE, L. AND M. GERTLER (2023): “Oil Prices, Monetary Policy and Inflation Surges.” NBER Working Paper 31263, National Bureau of Economic Research
- GERDRUP, K. R., E. M. KRAVIK, K. S. PAULSEN, AND Ø. ROBSTAD (2017): “Documentation of NEMO - Norges Bank’s Core Model for Monetary Policy Analysis and Forecasting.” Staff Memo, Norges Bank
- GONÇALVES, E. AND G. KOESTER (2022): “The Role of Demand and Supply in Underlying Inflation—Decomposing HICPX Inflation into Components.” *Economic Bulletin Boxes*, 7.
- HJORTSOE, I., M. R. WEALE, AND T. WIELADEK (2016): “Monetary Policy and the Current Account: Theory and Evidence.” CEPR Discussion Paper No. DP11204, Bank of England
- JOVIČIĆ, G. AND D. KUNOVAC (2017): “What is Driving Inflation and GDP in a Small European Economy: The Case of Croatia.” Working Papers W-49, Croatian National Bank
- KABACA, S. AND K. TUZCUOGLU (2023): “Supply Drivers of US Inflation Since the COVID-19 Pandemic.” Staff Working Paper, Bank of Canada
- LYBEK, T. (2023): “Hungarian Monetary Policy Operations Before, During, and After the Pandemic: Hungary.” Selected Issues Papers 005, International Monetary Fund
- NERI, S., F. BUSETTI, C. CONFLITTI, F. CORSELLO, D. DELLE MONACHE, AND A. TAGLIABRACCI (2023): “Energy Price Shocks and Inflation in the Euro Area.” Occasional Paper Series No. 792, Banca d’Italia
- POP, R.-E. AND B. MURARAŞU (2018): “The Drivers of Inflation in a Small Open European Economy: The Case of Romania.” *International Journal of Trade, Economics and Finance*, 9(2):84–87.
- RUBBO, E. (2024): “What Drives Inflation? Lessons from Disaggregated Price Data.” NBER Working Paper 32194, National Bureau of Economic Research
- SHAPIRO, A. H. (2022): “Decomposing Supply and Demand Driven Inflation.” Working Papers, Federal Reserve Bank of San Francisco
- SZAFRANEK, K., G. SZAFRAŃSKI, AND A. LESZCZYŃSKA-PACZESNA (2024): “Inflation Returns. Revisiting the Role of External and Domestic Shocks with Bayesian Structural VAR.” *International Review of Economics & Finance*, 93:789–810.
- ZHA, T. (1999): “Block Recursion and Structural Vector Autoregressions.” *Journal of Econometrics*, 90(2):291–316.

## Appendix A: Data

*Figure A1: Dataset*





## Appendix B: Description of BVAR

Consider a traditional reduced-form VAR model with  $T$  periods of observations,  $n$  variables, and  $p$  lags rewritten in matrix form:

$$Y = XB + \mathcal{E}, \tag{B1}$$

where  $Y$  is a  $T \times n$  matrix of independent variables,  $X$  is a  $T \times k$  matrix of regressors,  $\mathcal{E}$  is a  $T \times n$  matrix of residuals, and  $B$  is a  $k \times n$  matrix of regression parameters, with  $k = 1 + pn$  as the number of regression parameters per VAR equation.<sup>28</sup> The matrix of independent variables is constructed as

$$Y = \left[ \{y_t\}_{t=1}^T \right]',$$

and the matrix of regressors as

$$X = \left[ \{x_t\}_{t=1}^T \right]',$$

with

$$x_t = [1, \{y'_{t-i}\}_{i=1}^p]'$$

To derive the results that will follow, we introduce the vectorized version of the above matrix equation (B1). Let  $\otimes$  denote the Kronecker product, and  $\text{vec}(\cdot)$  the operator that stacks the columns of a matrix into a vector. Using the vectorization rule that  $\text{vec}(ABC) = (C' \otimes A)\text{vec}(B)$ , we can derive that

$$y = (I_n \otimes X)\beta + \varepsilon, \tag{B2}$$

where  $y = \text{vec}(Y)$  is a  $Tn \times 1$  vector of regressands, and  $\beta = \text{vec}(B)$  is a  $kn \times 1$  vector of regression parameters. Furthermore,  $\varepsilon = \text{vec}(\mathcal{E})$  is a  $Tn \times 1$  vector of shocks that are distributed according to the normal distribution

$$\varepsilon \sim \mathcal{N}(0, \Sigma \otimes I_T). \tag{B3}$$

For the Bayesian estimation of the model, we rely on the normal-diffuse prior distribution. It assumes an uninformative prior for  $\Sigma$ . The parameters in  $\beta$  follow a Normal distribution, while variance  $\Sigma$  has an inverse-Wishart distribution:

$$\beta \sim \mathcal{N}(\underline{\beta}, \underline{V}), \tag{B4}$$

$$\Sigma \sim \mathcal{IW}(\underline{S}, \underline{\nu}). \tag{B5}$$

---

<sup>28</sup> The notation is mostly consistent with Dieppe et al. (2016).

The prior beliefs related to  $\beta$  are specified in Minnesota style. This entails a constant value below one (we opt for the commonly used 0.8) for the first own lag of an endogenous variable, otherwise zero. It is assumed that no covariance exists between the terms in  $\beta$ , hence its covariance matrix is diagonal. For parameters relating endogenous variables to their own lags, the variance is given by:

$$\sigma_{a_{ii}}^2 = \left( \frac{\lambda_1}{l\lambda_3} \right)^2, \quad (\text{B6})$$

where  $\lambda_1$  is an overall tightness parameter,  $l$  is the lag considered by the coefficient, and  $\lambda_3$  is a scaling coefficient controlling the speed at which the coefficients for lags greater than 1 converge to 0 with greater certainty. For parameters related to cross-variable lag coefficients, the variance is given by:

$$\sigma_{a_{ij}}^2 = \left( \frac{\sigma_i^2}{\sigma_j^2} \right) \left( \frac{\lambda_1 \lambda_2}{l\lambda_3} \right)^2, \quad (\text{B7})$$

where  $\sigma_i$  and  $\sigma_j$  denote the OLS residual variance of the auto-regressive models estimated for variables  $i$  and  $j$ , and  $\lambda_2$  represents a cross-variable specific variance parameter. Block exogeneity is assured by setting a zero prior mean on the relevant coefficients and by implementing an arbitrary small prior variance through the hyperparameter  $(\lambda_4)^2$ , ensuring that they are tight around zero. The hyperparameter values used are summarized in Table B1.

Since the normal diffuse prior distribution is used, the prior scale matrix for  $\Sigma$  is

$$\tilde{S} = (Y - XB)^T (Y - XB). \quad (\text{B8})$$

**Table B1: Hyperparameters Used for Prior**

Hyperparameter	Description	Value
$\lambda_1$	Defines uncertainty about the prior on own lags (overall tightness parameter)	0.1
$\lambda_2$	Cross-variable specific variance parameter	0.5
$\lambda_3$	Lag decay	1
$\lambda_4$	Prior variance on coefficients associated with block exogeneity	0.001

**Table B2: Structural Identification of Shocks for Slovakia**

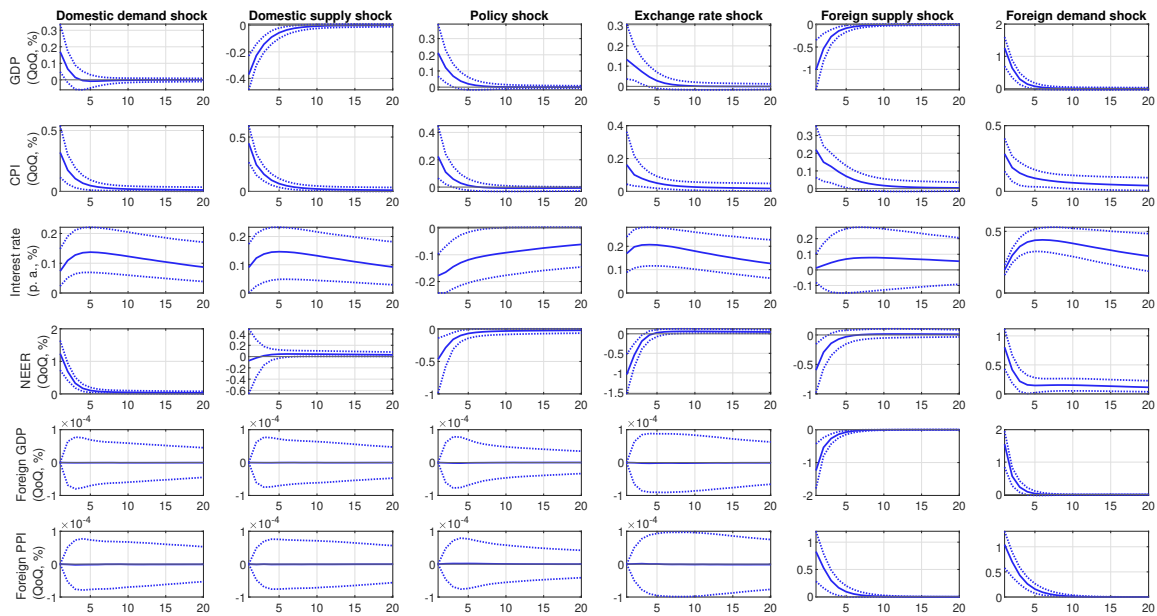
<i>Variable\Shock</i>	Domestic Demand	Domestic Supply	Monetary Policy	Exchange Rate	Foreign Supply	Foreign Demand
Real Output	+	–	+	+		
Inflation	+	+	+	+		
Interest Rate	0	0	–	+		
Exchange Rate	+		–	–		
Foreign Output	<b>0</b>	<b>0</b>	<b>0</b>	<b>0</b>	–	+
Foreign Inflation	<b>0</b>	<b>0</b>	<b>0</b>	<b>0</b>	+	+

**Note:** A “0” ensures that this variable cannot move contemporaneously in response to the particular shock. A “+” (“–”) indicates that this variable must respond positively (negatively) to the particular shock. A “**0**” denotes block exogeneity. No sign ( ) implies that the variable is not expected to respond to the specific shock in any particular direction. A positive sign for the exchange rate indicates appreciation.

## Appendix C: Additional Results – Baseline Analysis

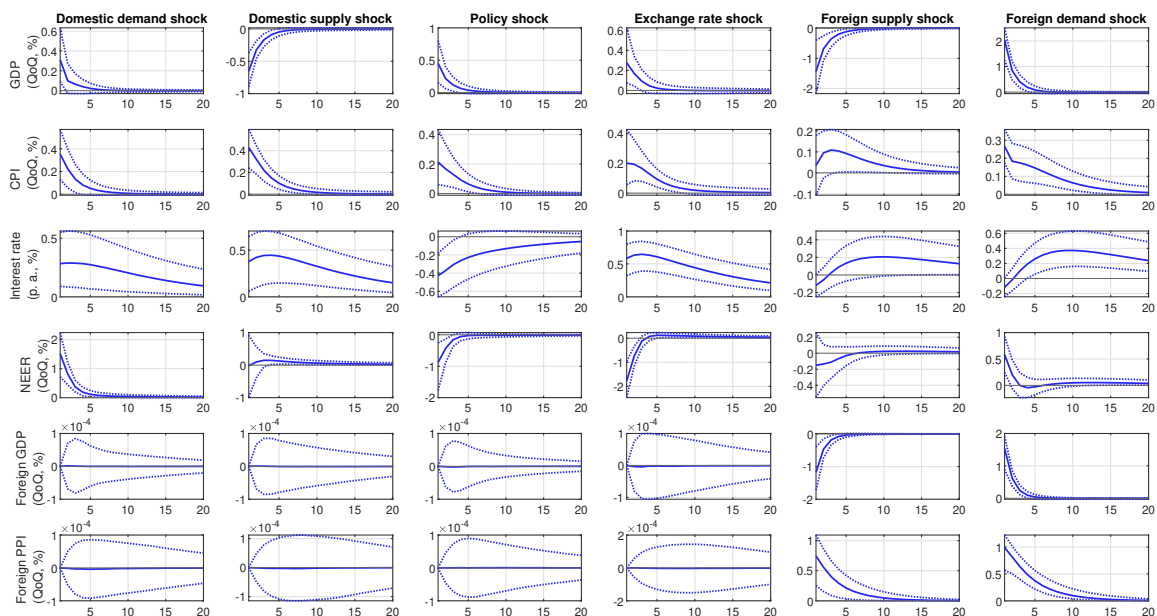
### C.1 Impulse Response Functions

*Figure C1: Czechia*



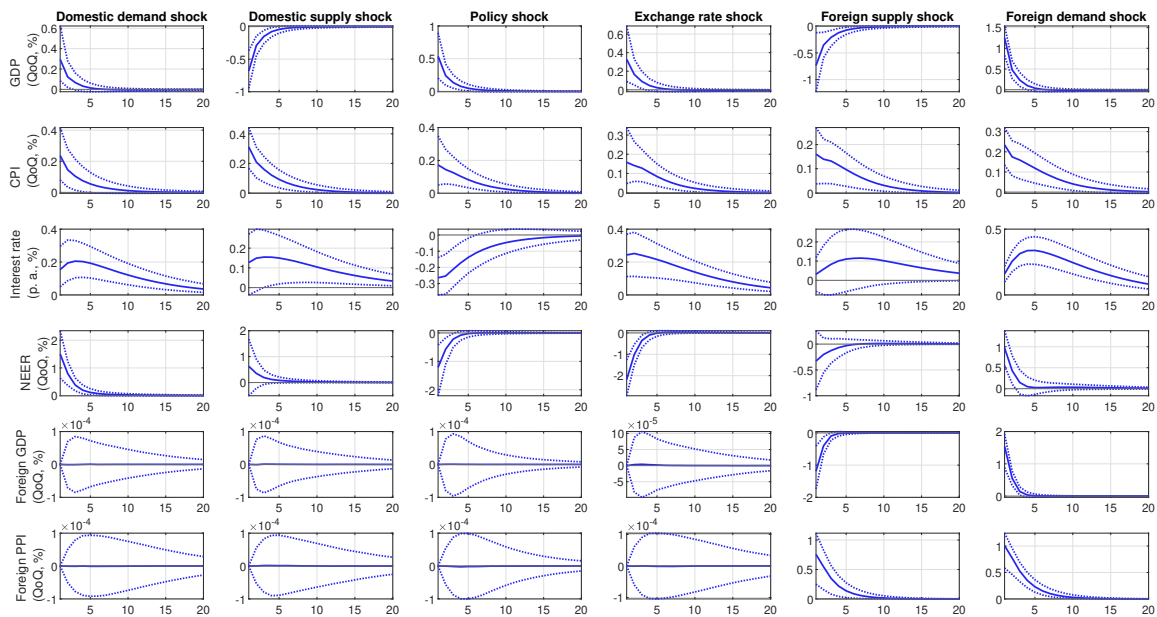
**Note:** Median responses with 68% credible intervals. The responses correspond to one standard deviation shocks and cover the 20 quarters after the initial shock.

*Figure C2: Hungary*



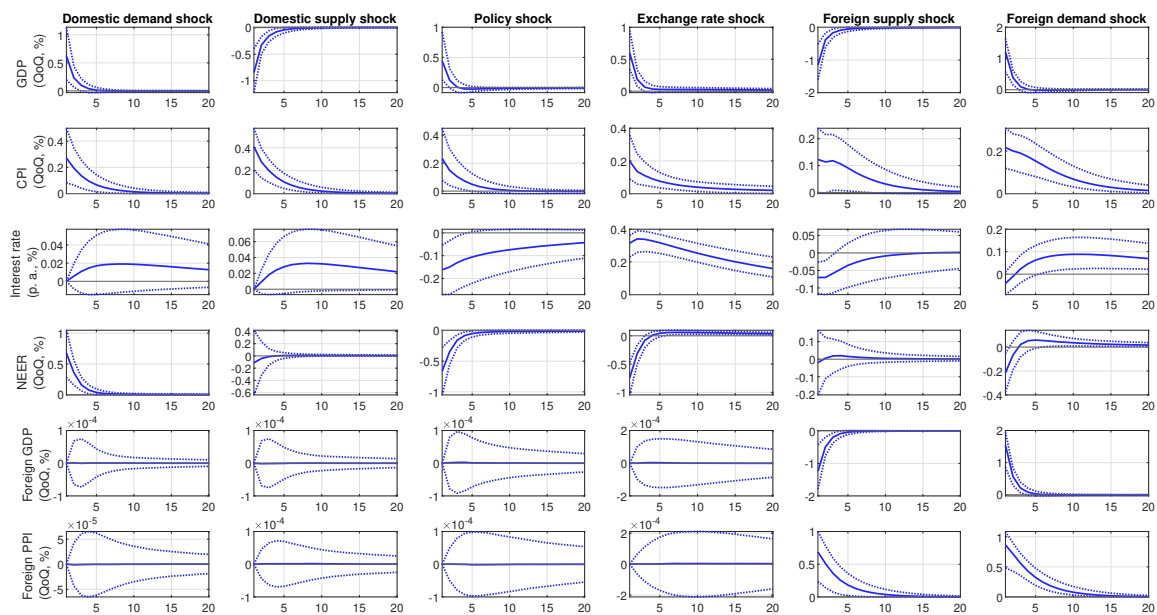
**Note:** Median responses with 68% credible intervals. The responses correspond to one standard deviation shocks and cover the 20 quarters after the initial shock.

Figure C3: Poland



**Note:** Median responses with 68% credible intervals. The responses correspond to one standard deviation shocks and cover the 20 quarters after the initial shock.

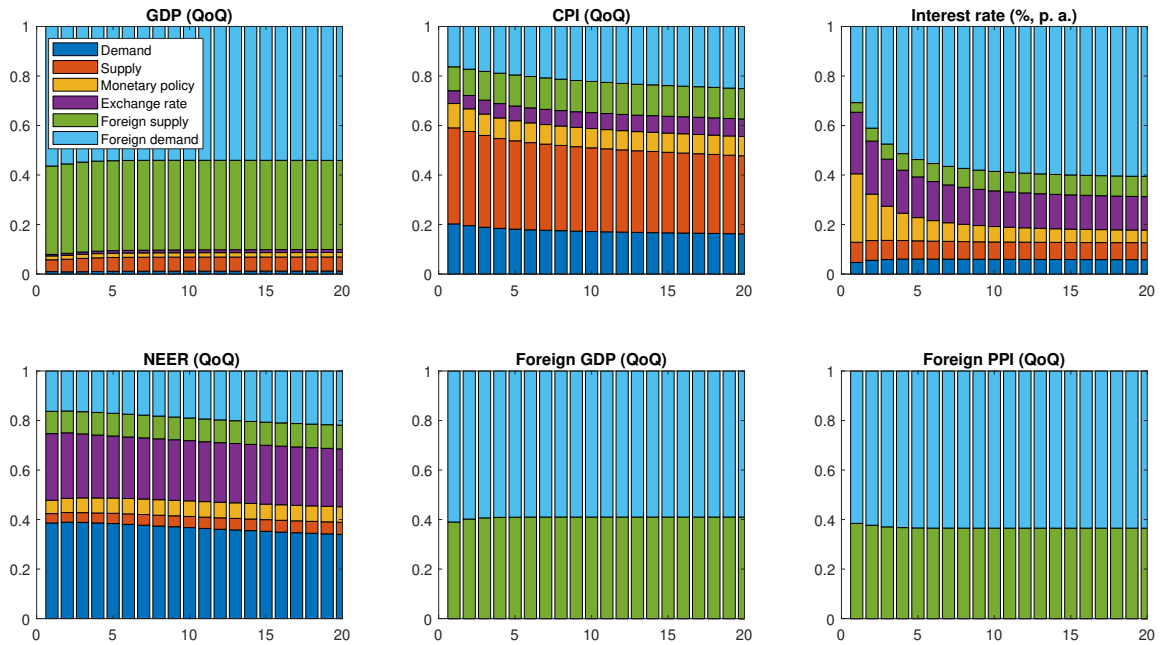
Figure C4: Slovakia



**Note:** Median responses with 68% credible intervals. The responses correspond to one standard deviation shocks and cover the 20 quarters after the initial shock.

## C.2 Forecast Error Variance Decomposition

*Figure C5: Czechia*



*Figure C6: Hungary*

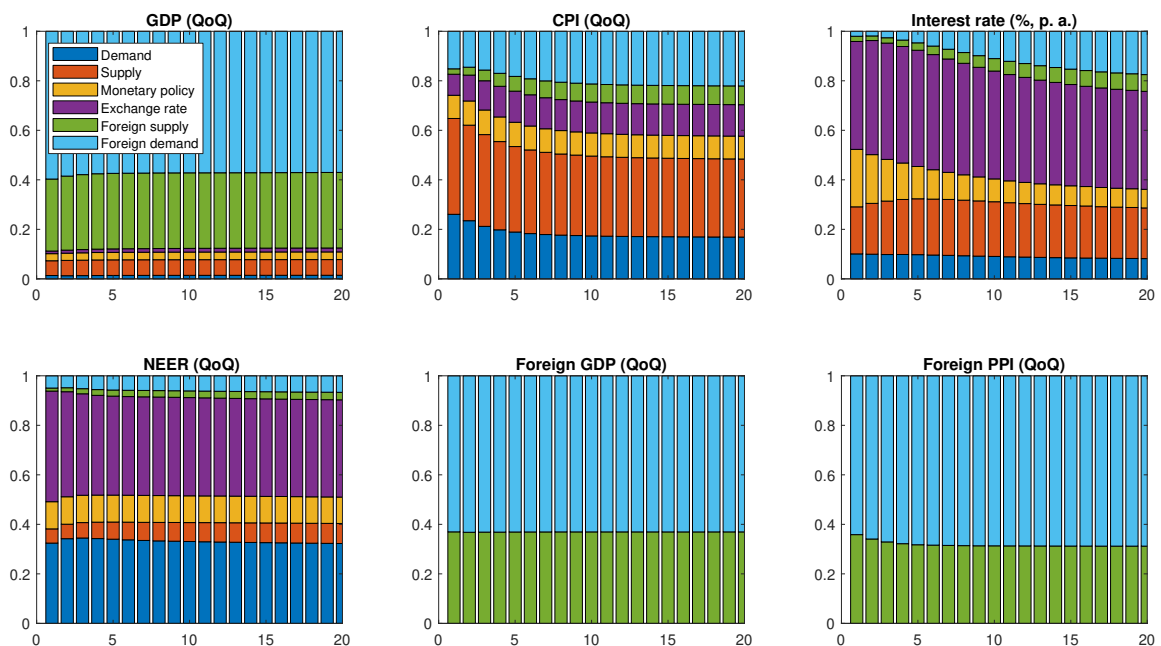


Figure C7: Poland

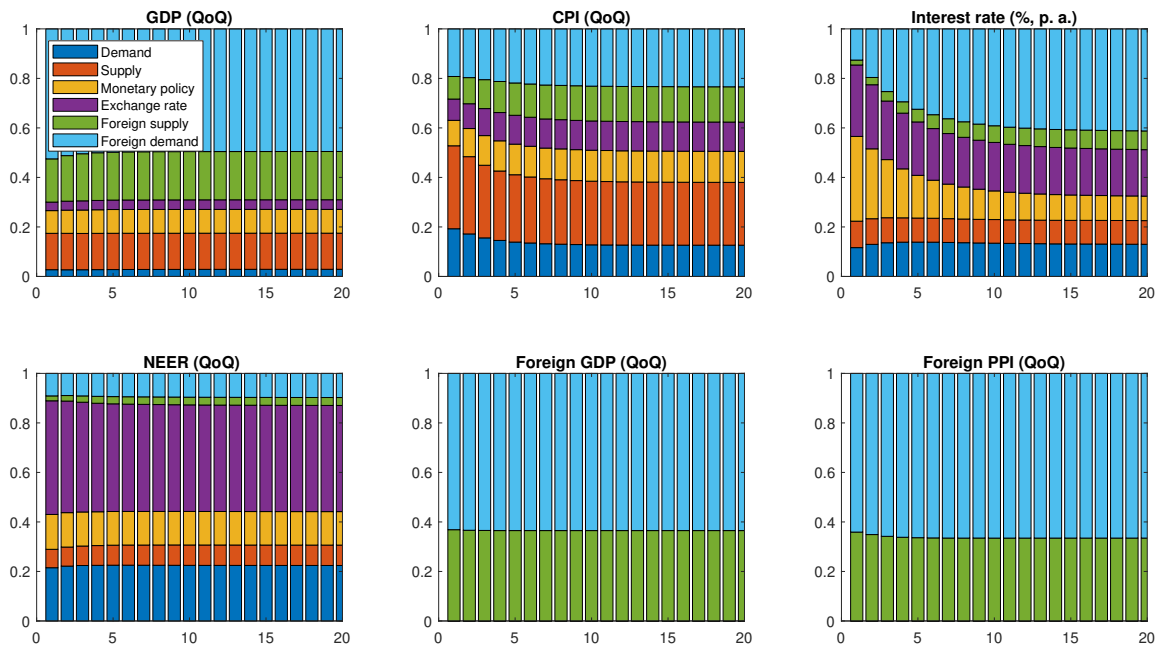
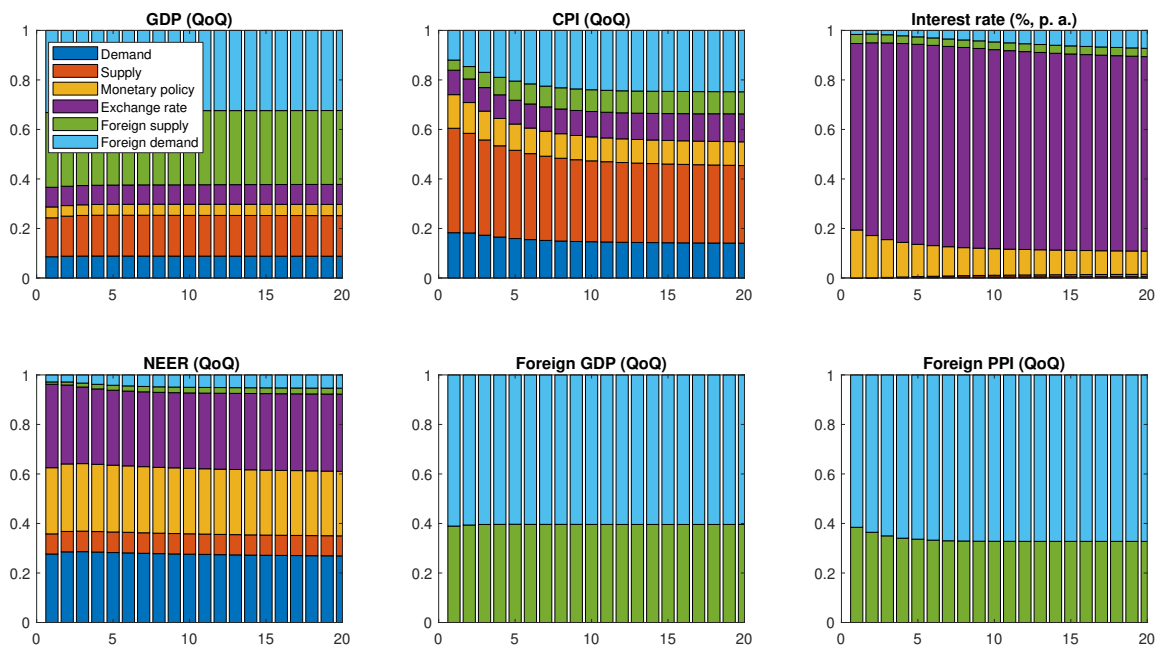
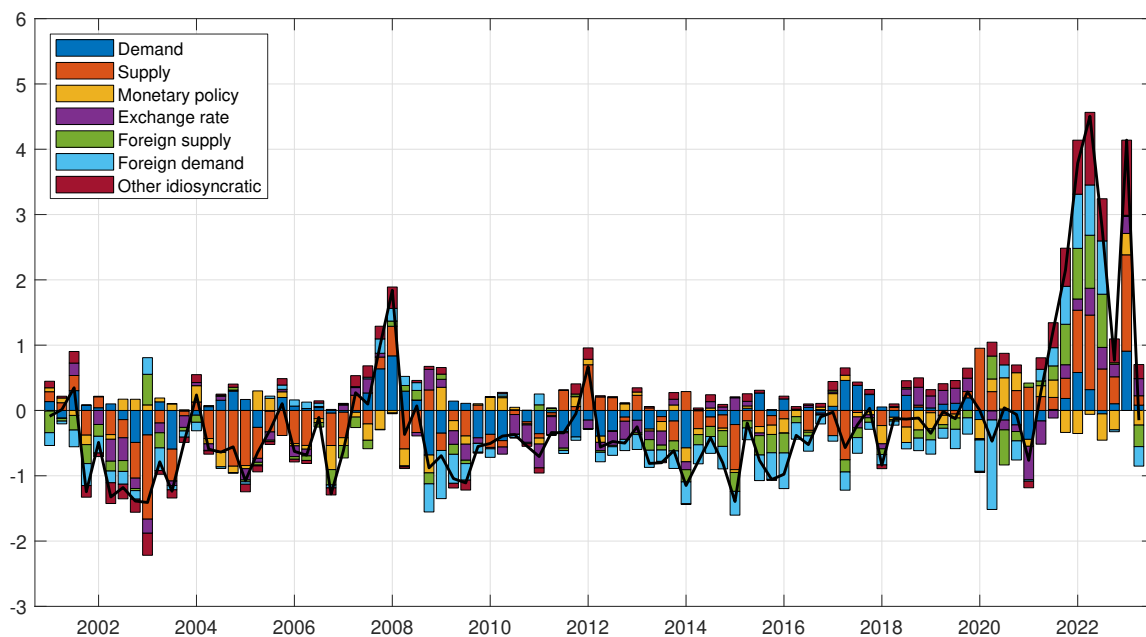


Figure C8: Slovakia



### C.3 Historical Decomposition of Headline Inflation

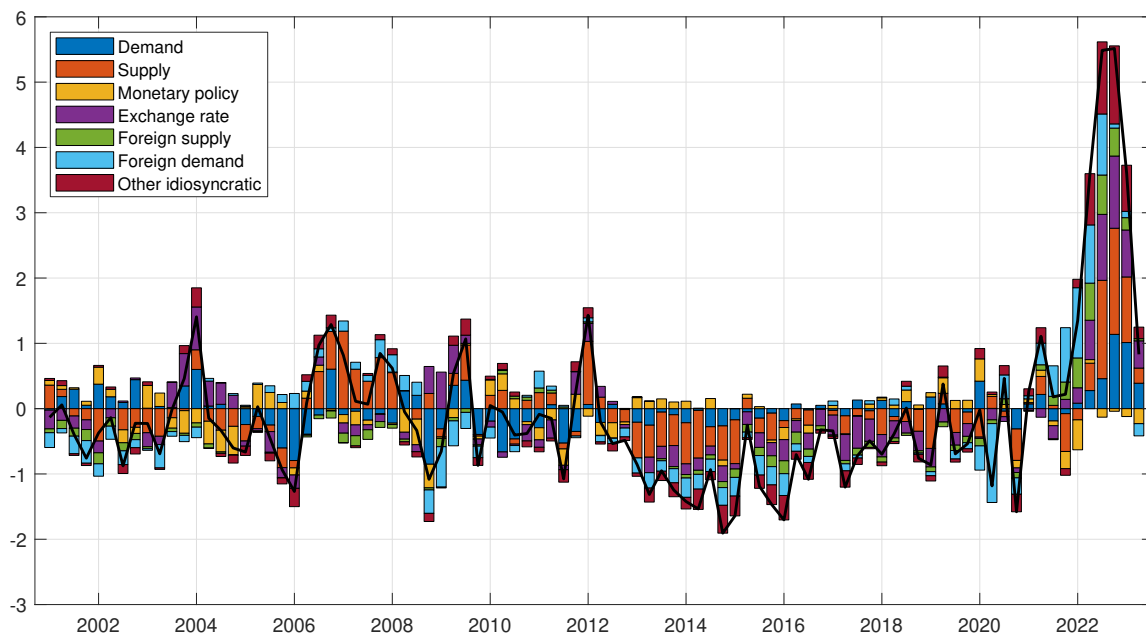
*Figure C9: Czechia*



**Note:** Contribution of shocks to the quarter-on-quarter change in the CPI index, in percentage points. Deviations from the mean and from the contribution of the initial conditions.

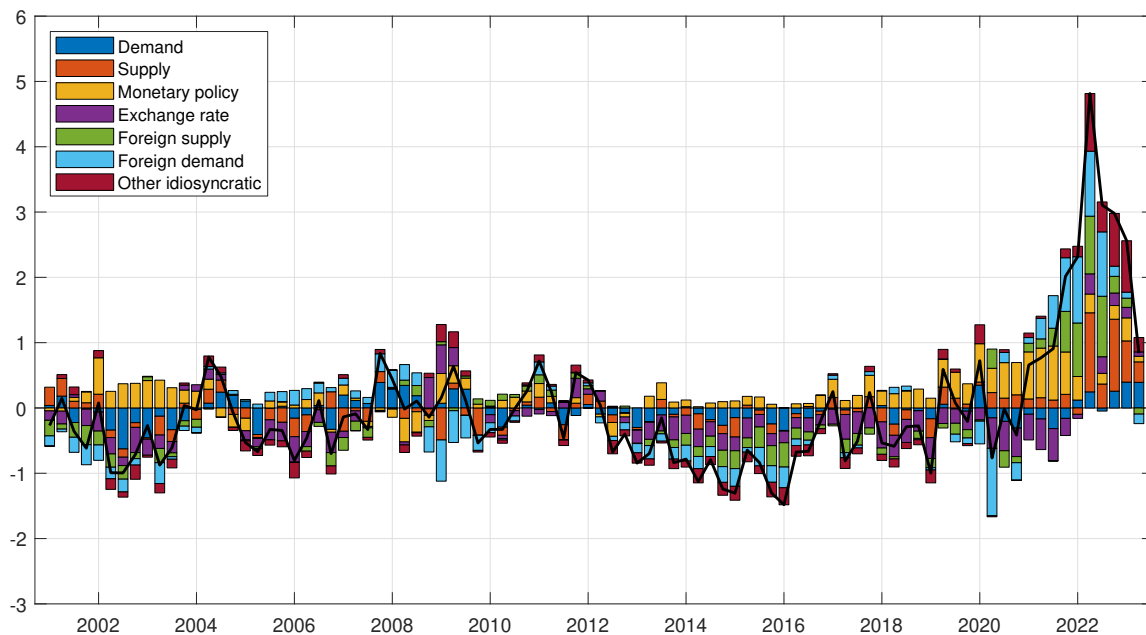
The period of higher inflation preceding the Global Financial Crisis (GFC) was primarily due to domestic demand, although limited domestic supply and high foreign demand also played roles. In the aftermath of the GFC until 2014, a series of negative domestic demand shocks, such as negative sentiment of households and fiscal consolidation, muted inflation. In 2009 and then also from 2012 until 2021, negative foreign demand shocks counteracted in the same direction. This pattern is evident in other Central European economies as well. It was caused by the economic downturn during the GFC and only slow output growth in Europe after the euro debt crisis. Appreciation exchange rate shocks further contributed negatively to inflation from 2009 to 2013, suggesting that the currency depreciation was smaller than what would correspond to a subdued economy. The introduction of the exchange rate floor in 2013Q4 resolved the issue of an overvalued koruna, leading to the disappearance of exchange rate shocks. The drop in oil prices throughout 2014–2015 was then reflected in a negative contribution of foreign supply shocks to inflation.



**Figure C10: Hungary**

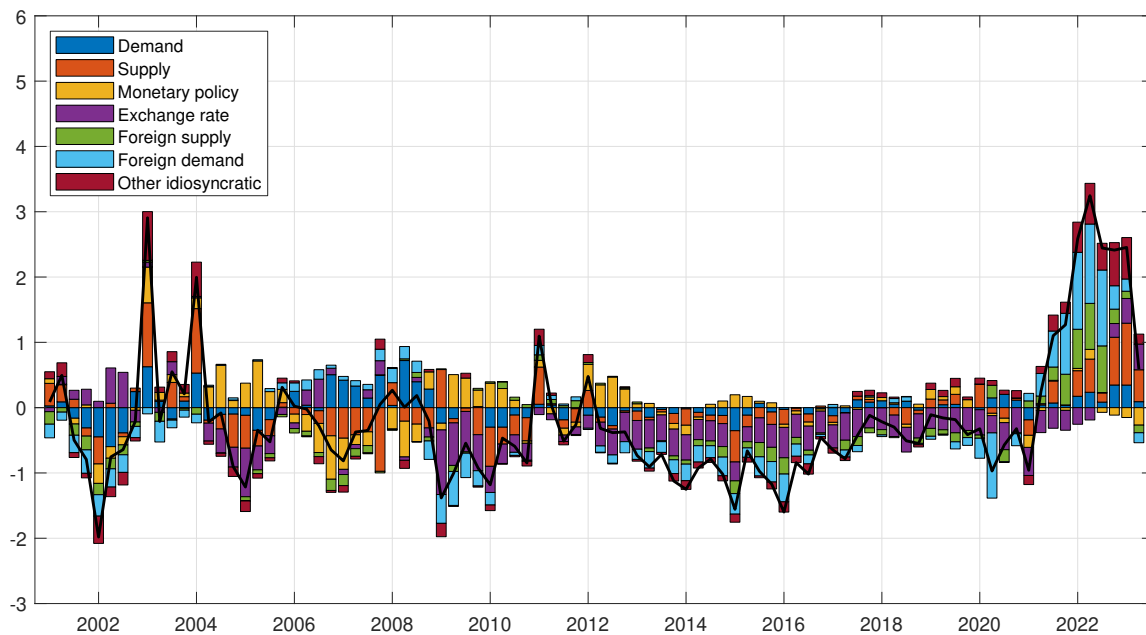
**Note:** Contribution of shocks to the quarter-on-quarter change in the CPI index, in percentage points. Deviations from the mean and from the contribution of the initial conditions.

In the run-up to the GFC, inflation was driven primarily by adverse domestic supply shocks. These shocks were more pronounced than in Czechia. Negative domestic and foreign demand shocks are identified during and after the GFC. Tight monetary policy dampened inflation to some extent in 2009 as well. Despite this, the forint depreciated markedly, so exchange rate shocks stimulated inflation. Positive domestic supply shocks, reflecting renewed economic growth in a situation of slowing price growth, contributed negatively to inflation during 2013–2015. However, prevailing adverse foreign demand shocks also muted inflation. These shocks should have put significant downward pressure on the forint, but that was not the case. Hence, appreciation shocks were present throughout the period 2013–2019. Foreign supply shocks are identified during the decline in oil prices in 2014–2015, albeit to a lesser extent than in other countries.

**Figure C11: Poland**

**Note:** Contribution of shocks to the quarter-on-quarter change in the CPI index, in percentage points. Deviations from the mean and from the contribution of the initial conditions.

In late 2007 and the first half of 2008, inflation was elevated due to both domestic and foreign demand shocks. However, in late 2008 and early 2009, exchange rate shocks began to contribute to inflation, coinciding with a significant depreciation of the Polish zloty compared to other currencies in Central Europe. This was partially counteracted by the negative impact of adverse foreign demand shocks. Unlike in other countries, domestic demand shocks did not mitigate inflation in Poland during the GFC, as the economic decline was relatively minor. A persistent current account deficit may explain why the depreciation of the zloty was insufficient, leading exchange rate shocks to exert downward pressure on inflation. It is worth noting that the Czech economy also faced an overvalued koruna until the exchange rate floor was introduced. The exchange rate shocks were offset by accommodative monetary policy shocks, which were particularly pronounced from 2017 to 2021. Policy rates remained stable at relatively low levels despite renewed robust output growth and increasing inflation. This response contrasts especially with the approach taken by the Czech National Bank. As output growth resumed and inflation began to rise, the Czech National Bank exited the exchange rate floor and increased its interest rate. Additionally, the National Bank of Poland decided to cut rates during the pandemic, in line with other central banks, further increasing the monetary easing.

**Figure C12: Slovakia**

**Note:** Contribution of shocks to the quarter-on-quarter change in the CPI index, in percentage points. Deviations from the mean and from the contribution of the initial conditions.

Monetary policy shocks have been one of the drivers of inflation in Slovakia since 2004. This might be due to the Slovak central bank's adoption of inflation targeting and its participation in the Exchange Rate Mechanism (ERM II). Consequently, policy shocks served to stabilize inflation and mitigate exchange rate fluctuations during that period. Positive domestic demand and supply shocks also influenced inflation before the GFC. In the aftermath of the GFC, both foreign and domestic demand were depressed, acting as anti-inflationary factors. Since the adoption of the euro in 2008, the presence of exchange rate shocks reflects the fact that Slovakia lost the possibility of autonomous monetary easing through the exchange rate after the financial crisis. For the other Central European countries, currencies depreciated, resulting in a strengthening of the euro against the forint, koruna, and zloty from Slovakia's perspective.

**C.4 Correlation of Structural Shocks****Table C1: Correlation of Structural Shocks Across Countries (full sample)**

Domestic Demand				Domestic Supply				
Czechia	Hungary	Poland	Slovakia	Czechia	Hungary	Poland	Slovakia	
1	0.270	0.323	0.760	Czechia	1	0.170	0.140	0.126
	1	0.314	0.243	Hungary		1	0.231	0.102
		1	0.141	Poland			1	-0.510
			1	Slovakia				1

Monetary Policy				Exchange Rate				
Czechia	Hungary	Poland	Slovakia	Czechia	Hungary	Poland	Slovakia	
1	0.235	0.366	-0.250	Czechia	1	0.367	0.394	0.021
	1	0.414	0.110	Hungary		1	0.535	0.173
		1	-0.168	Poland			1	0.075
			1	Slovakia				1

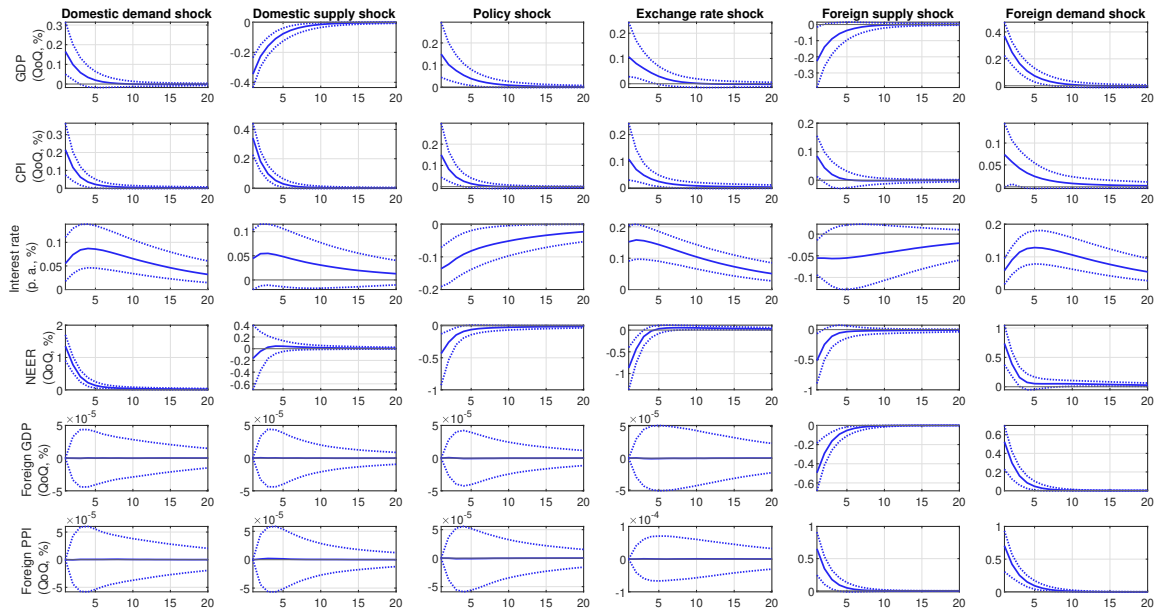
Foreign Supply				Foreign Demand				
Czechia	Hungary	Poland	Slovakia	Czechia	Hungary	Poland	Slovakia	
1	0.960	0.975	0.960	Czechia	1	0.974	0.984	0.964
	1	0.985	0.979	Hungary		1	0.990	0.974
		1	0.981	Poland			1	0.980
			1	Slovakia				1

**Note:** Structural shocks across countries are compared from 2001Q1 to 2023Q2. The correlations are based on the median of the shock's posterior distribution.

## Appendix D: Additional Results – Sensitivity Analysis

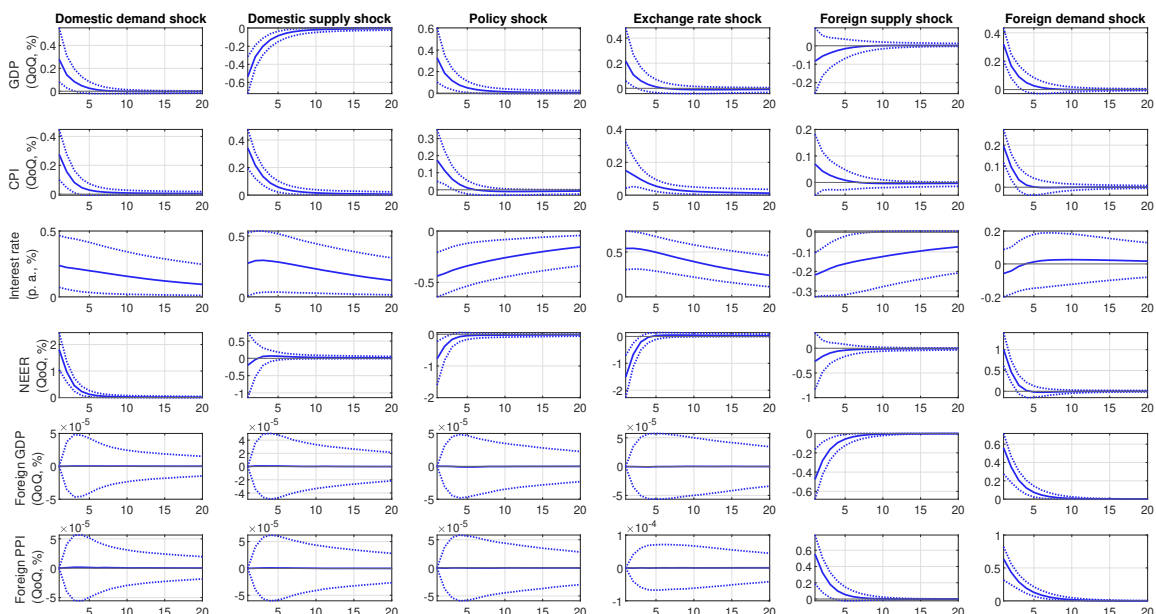
### D.1 Pre-pandemic Sample: Impulse Response Functions

*Figure D1: Czechia*

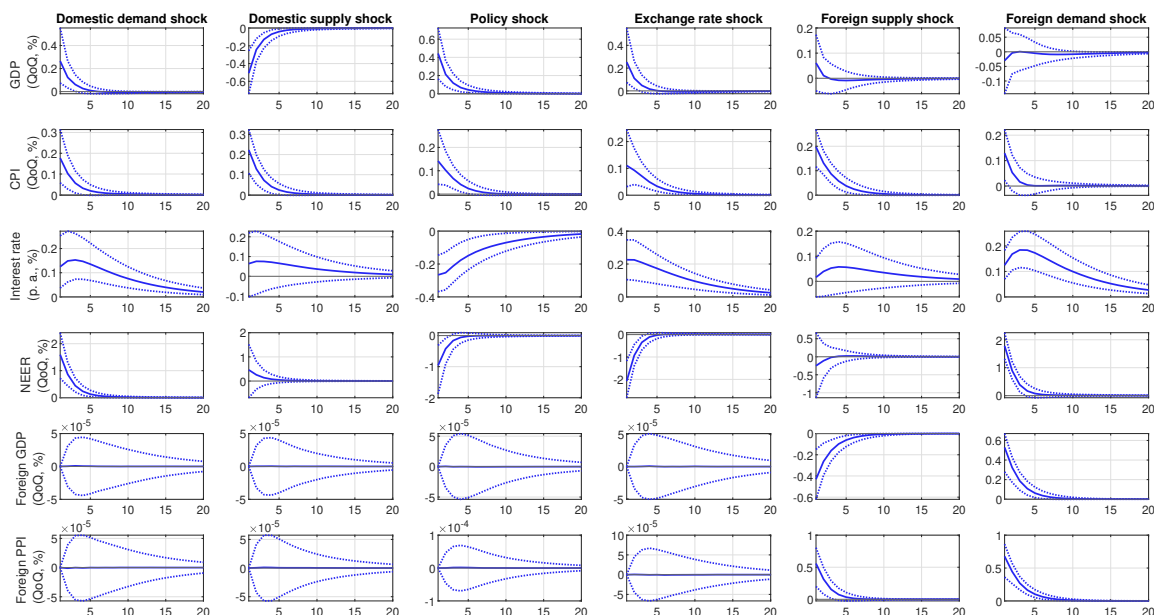


**Note:** Median responses with 68% credible intervals. The responses correspond to one standard deviation shocks and cover the 20 quarters after the initial shock.

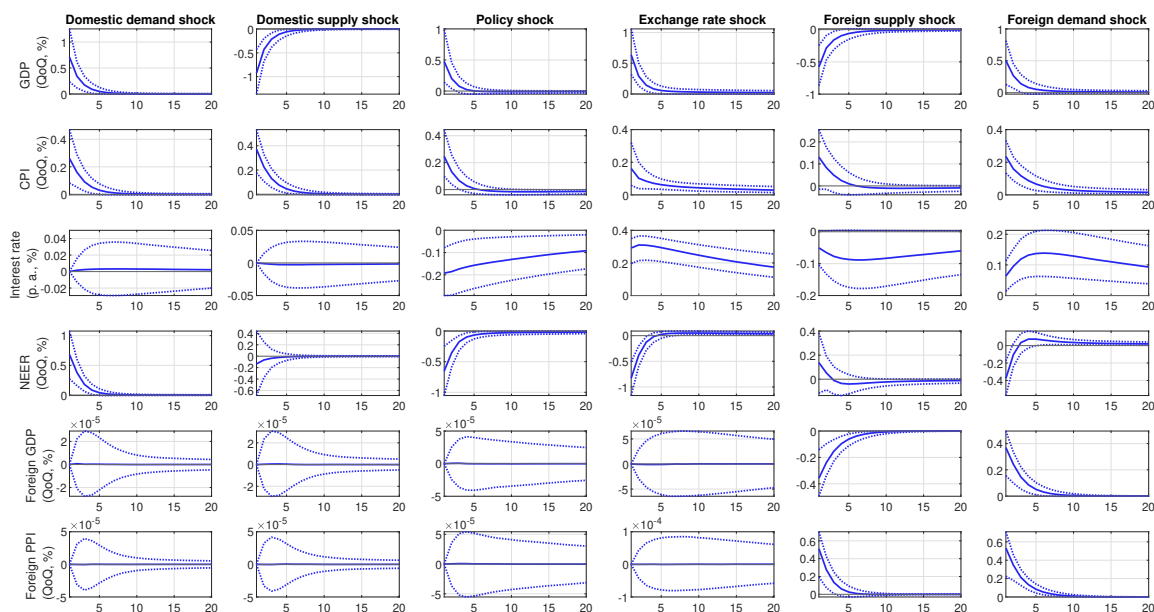
*Figure D2: Hungary*



**Note:** Median responses with 68% credible intervals. The responses correspond to one standard deviation shocks and cover the 20 quarters after the initial shock.

**Figure D3: Poland**

**Note:** Median responses with 68% credible intervals. The responses correspond to one standard deviation shocks and cover the 20 quarters after the initial shock.

**Figure D4: Slovakia**

**Note:** Median responses with 68% credible intervals. The responses correspond to one standard deviation shocks and cover the 20 quarters after the initial shock.

## D.2 Pre-pandemic Sample: Forecast Error Variance Decomposition

Figure D5: Czechia

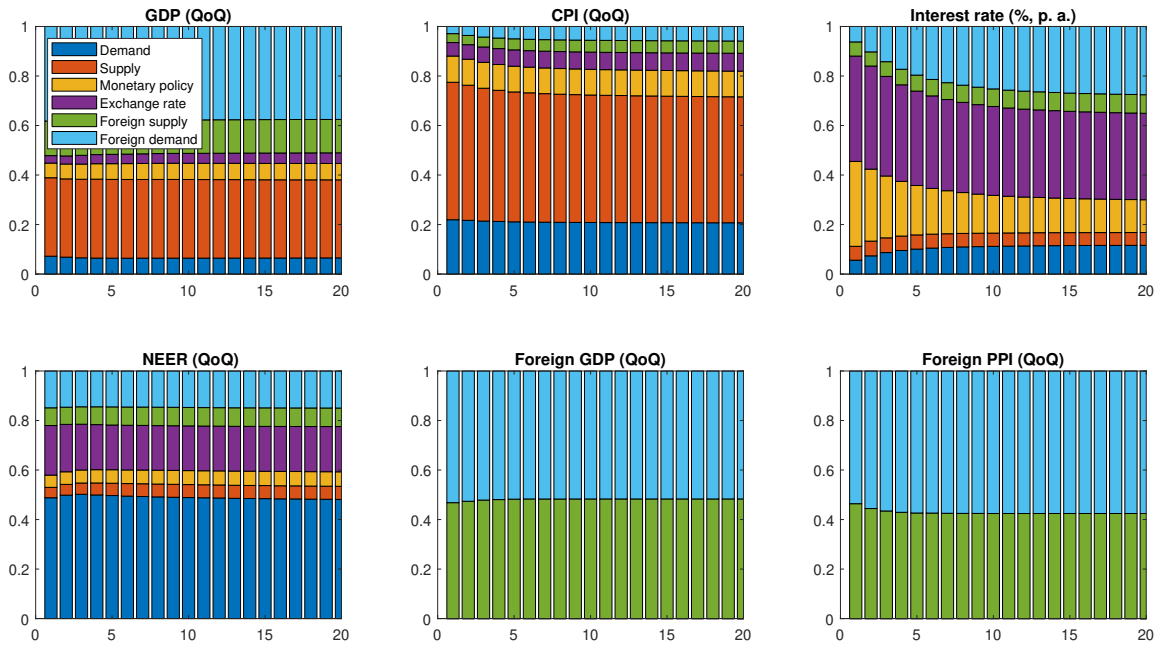
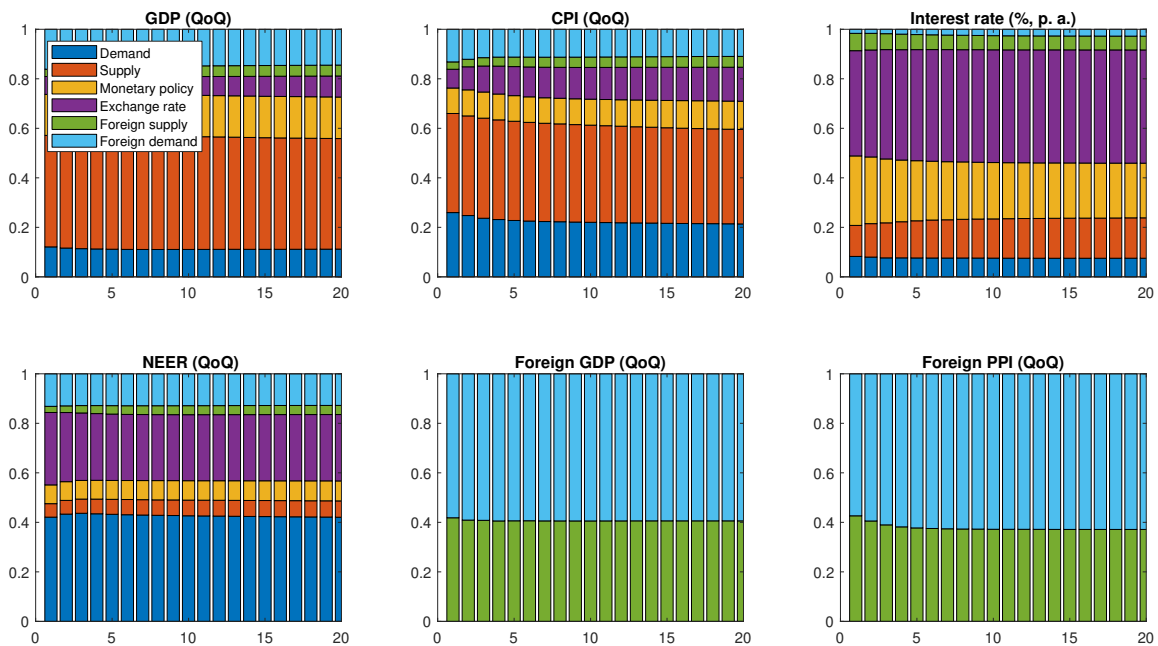
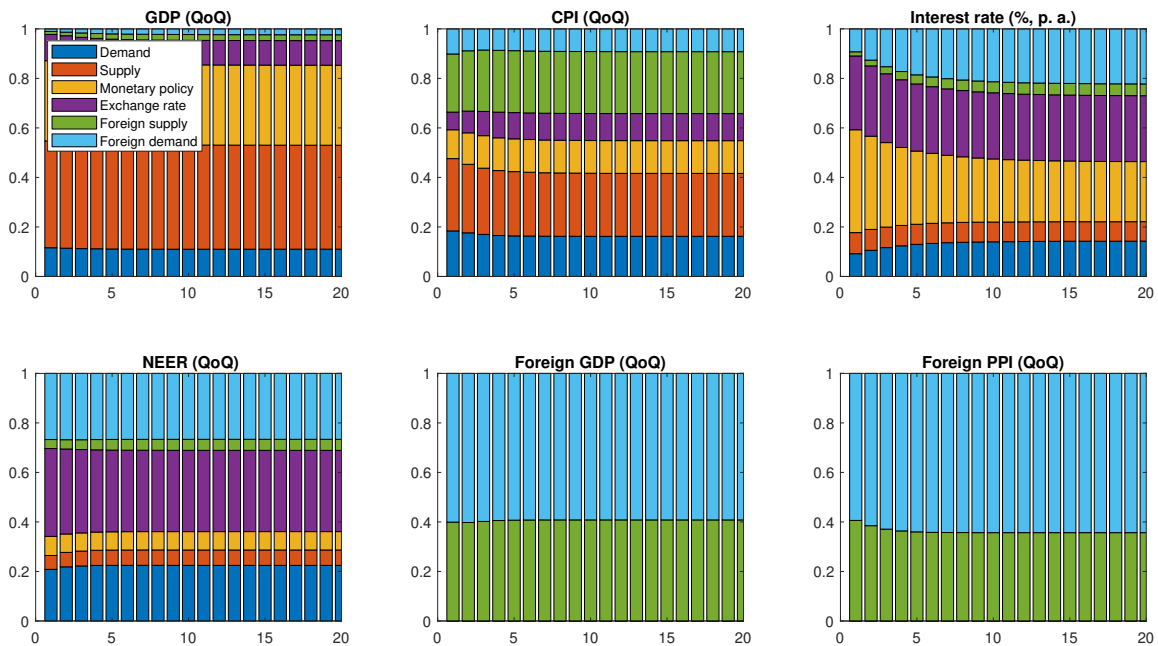


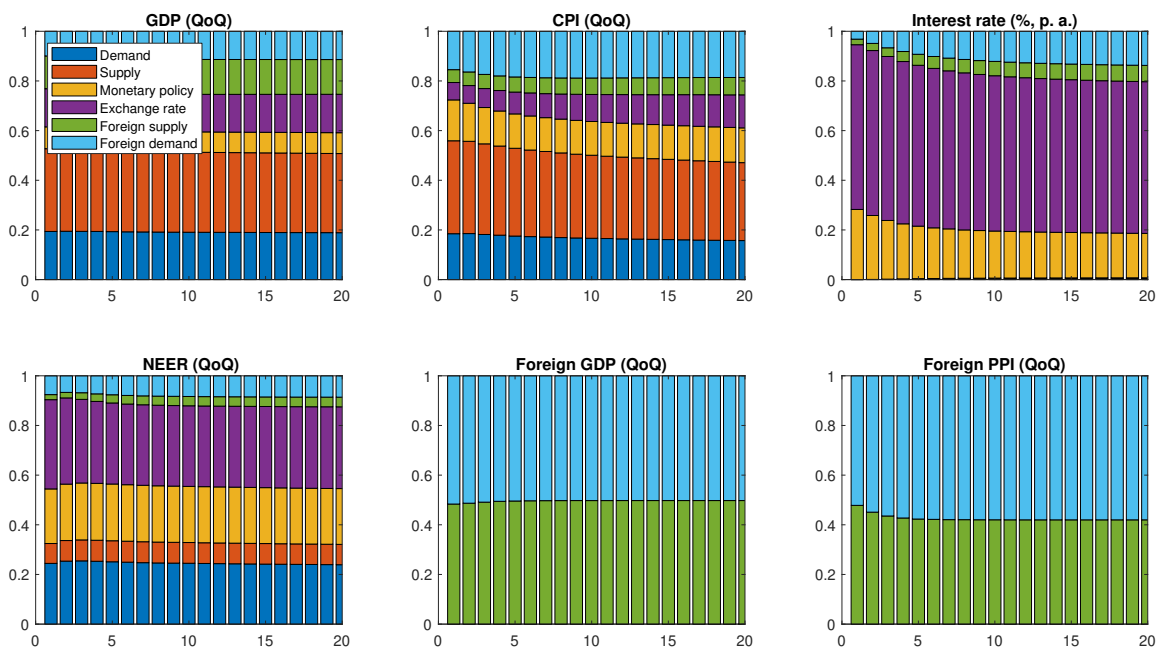
Figure D6: Hungary



**Figure D7: Poland**



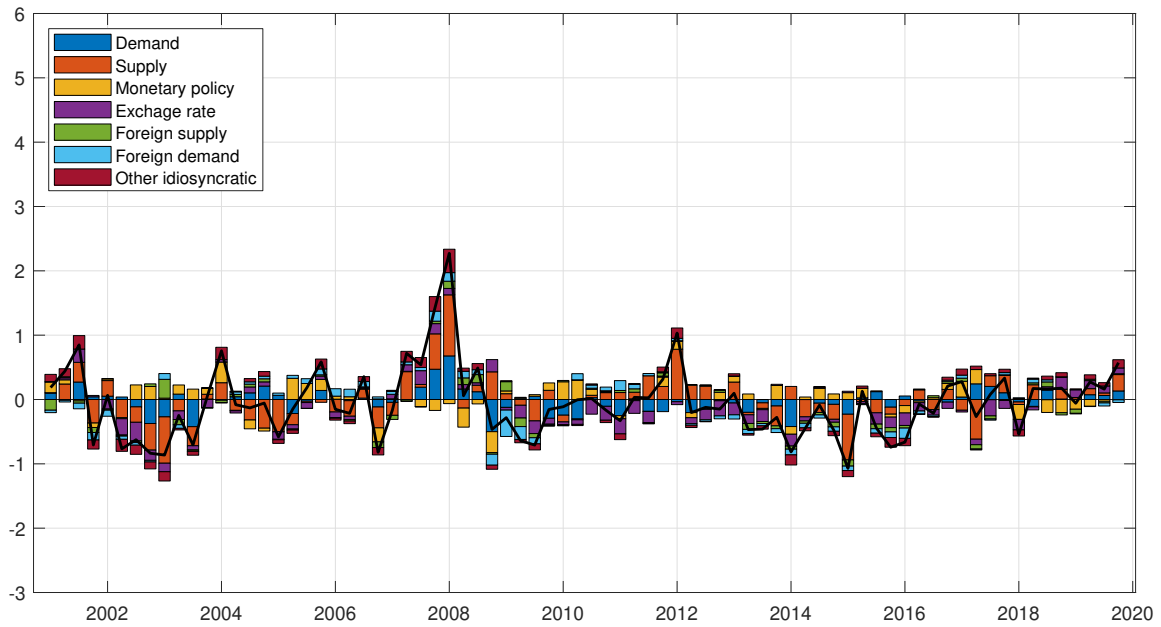
**Figure D8: Slovakia**





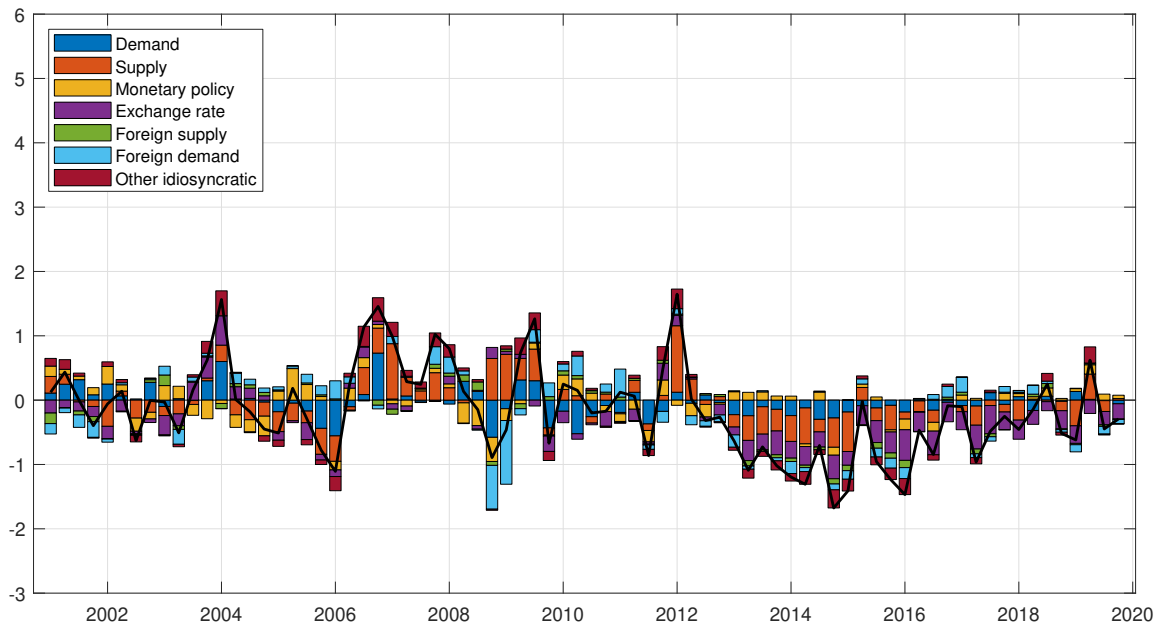
### D.3 Pre-pandemic Sample: Historical Decomposition of Headline Inflation

**Figure D9: Czechia**

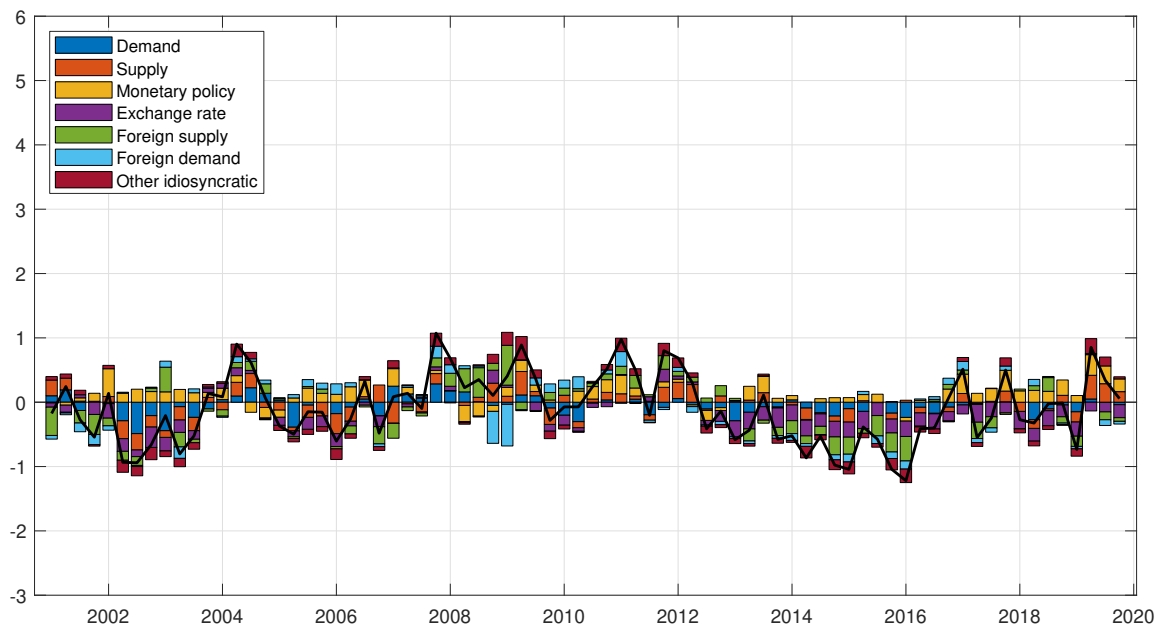


**Note:** Contribution of shocks to the quarter-on-quarter change in the CPI index, in percentage points. Deviations from the mean and from the contribution of the initial conditions.

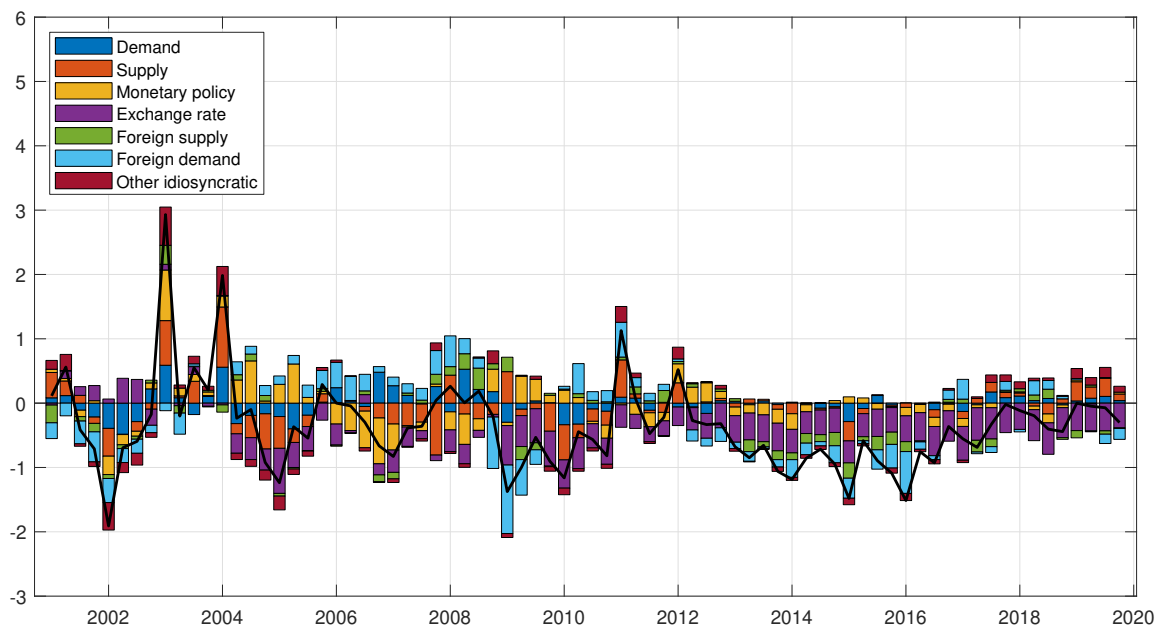
**Figure D10: Hungary**



**Note:** Contribution of shocks to the quarter-on-quarter change in the CPI index, in percentage points. Deviations from the mean and from the contribution of the initial conditions.

**Figure D11: Poland**

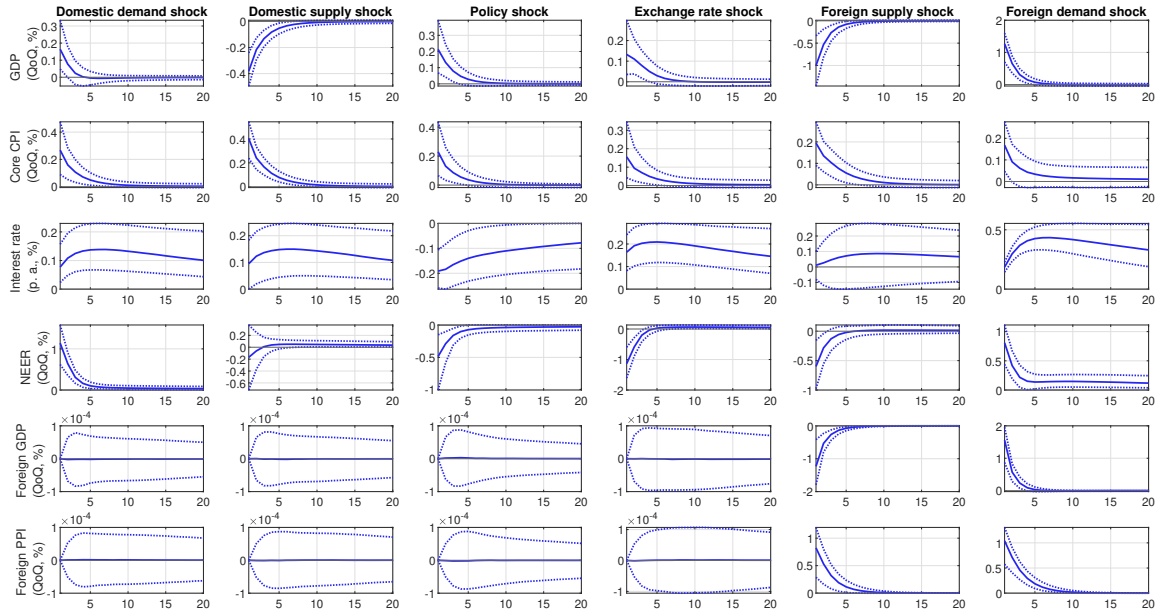
**Note:** Contribution of shocks to the quarter-on-quarter change in the CPI index, in percentage points. Deviations from the mean and from the contribution of the initial conditions.

**Figure D12: Slovakia**

**Note:** Contribution of shocks to the quarter-on-quarter change in the CPI index, in percentage points. Deviations from the mean and from the contribution of the initial conditions.

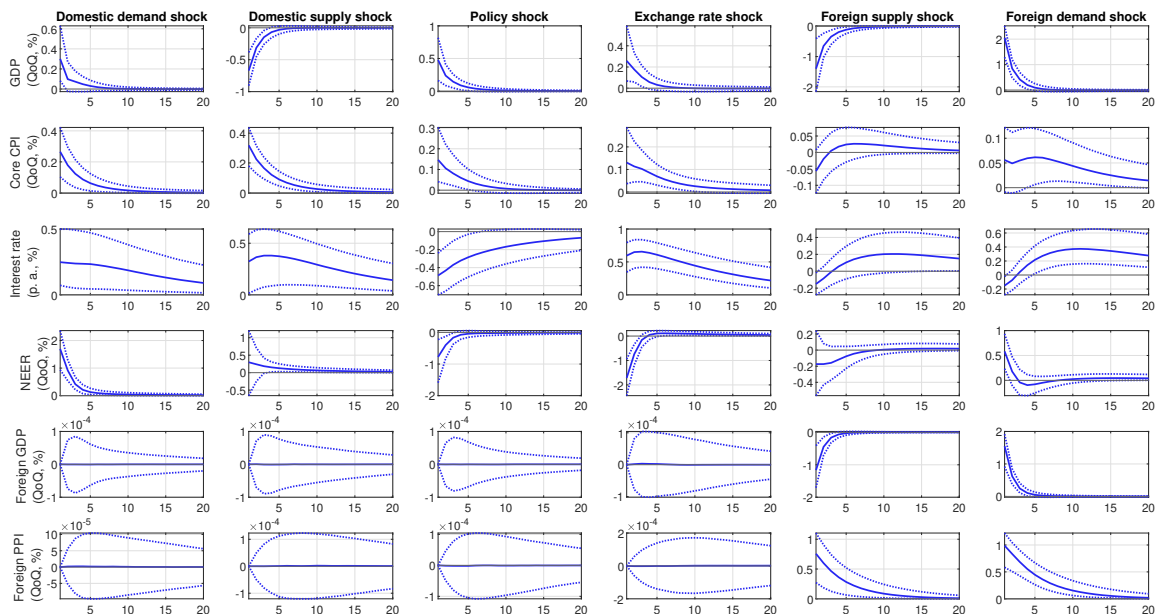
### D.4 Core Inflation: Impulse Response Functions

**Figure D13: Czechia**



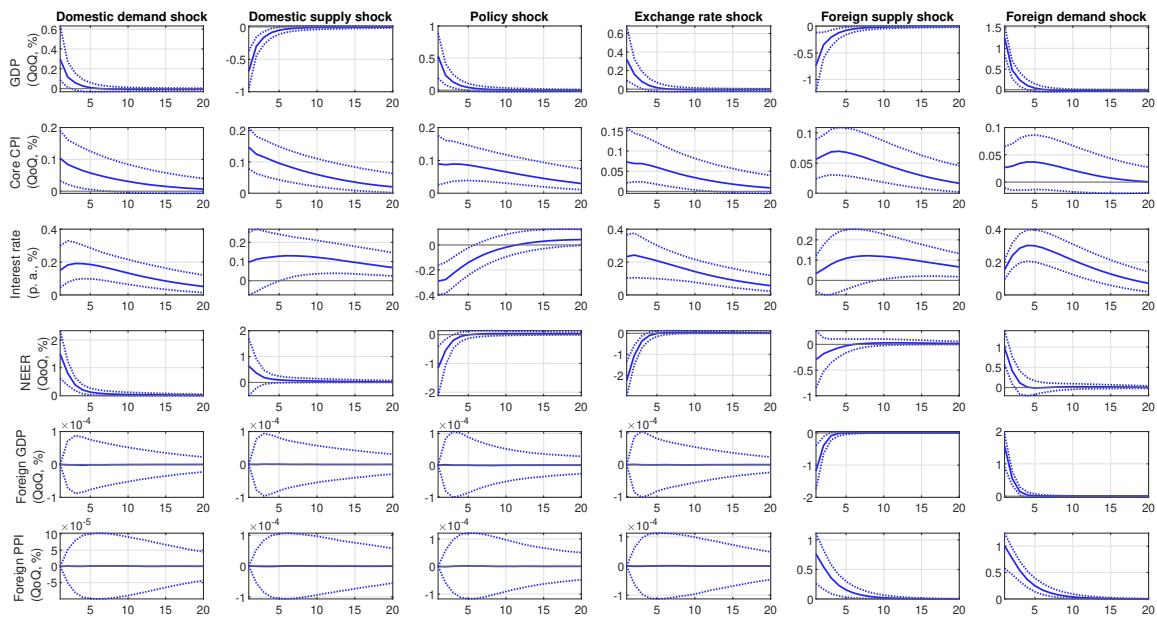
**Note:** Median responses with 68% credible intervals. The responses correspond to one standard deviation shocks and cover the 20 quarters after the initial shock.

**Figure D14: Hungary**



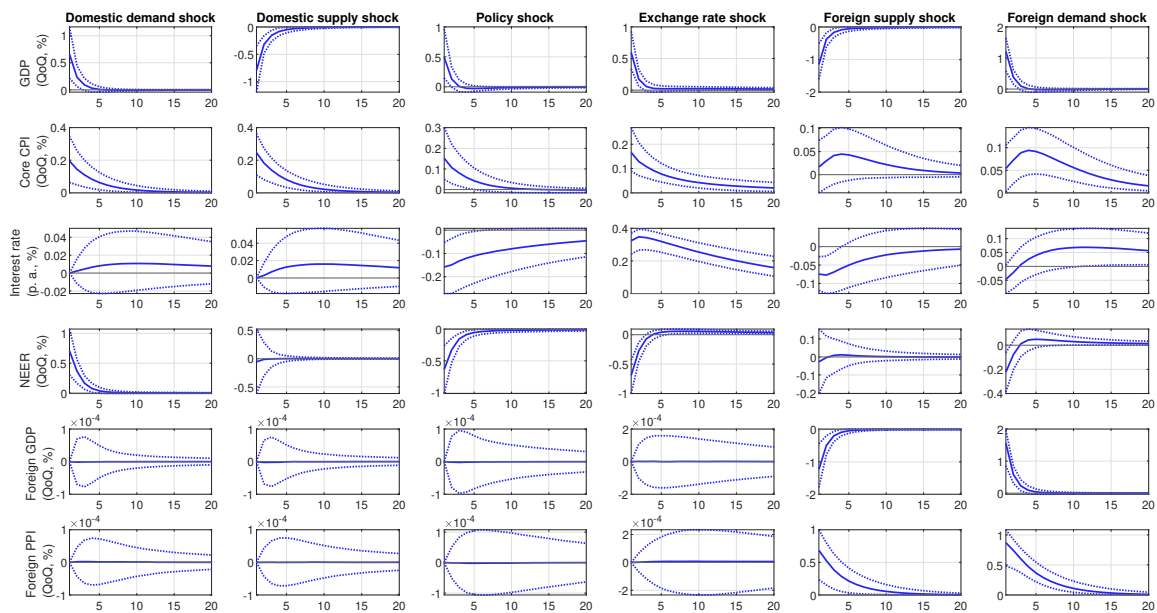
**Note:** Median responses with 68% credible intervals. The responses correspond to one standard deviation shocks and cover the 20 quarters after the initial shock.

**Figure D15: Poland**



**Note:** Median responses with 68% credible intervals. The responses correspond to one standard deviation shocks and cover the 20 quarters after the initial shock.

**Figure D16: Slovakia**



**Note:** Median responses with 68% credible intervals. The responses correspond to one standard deviation shocks and cover the 20 quarters after the initial shock.

### D.5 Core Inflation: Forecast Error Variance Decomposition

Figure D17: Czechia

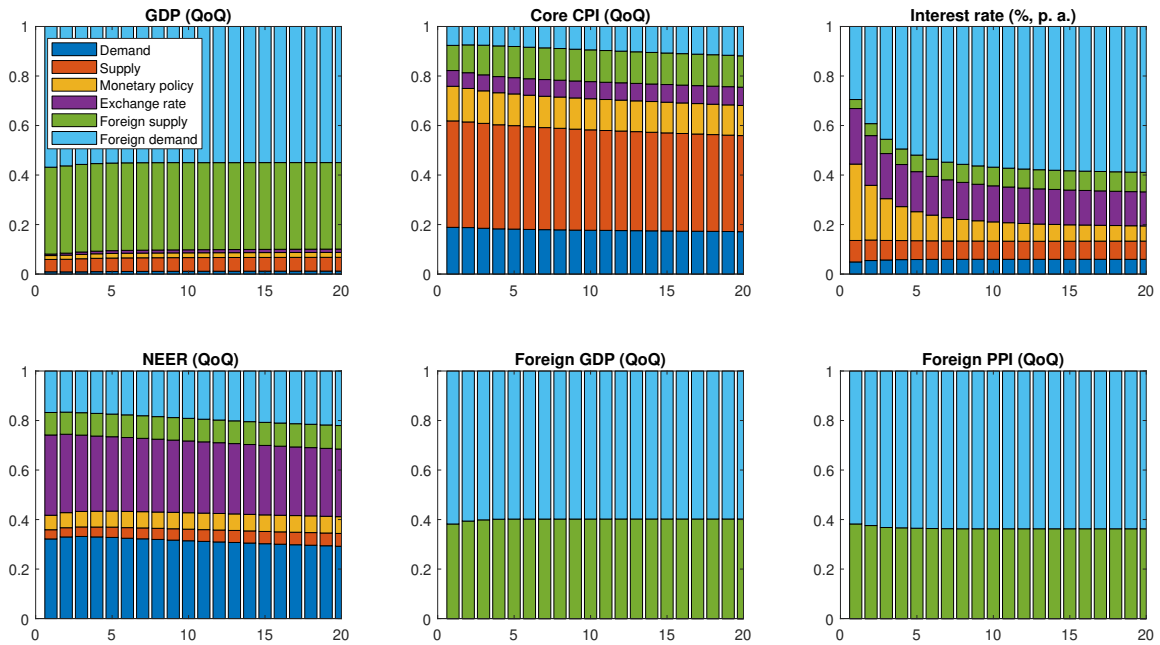
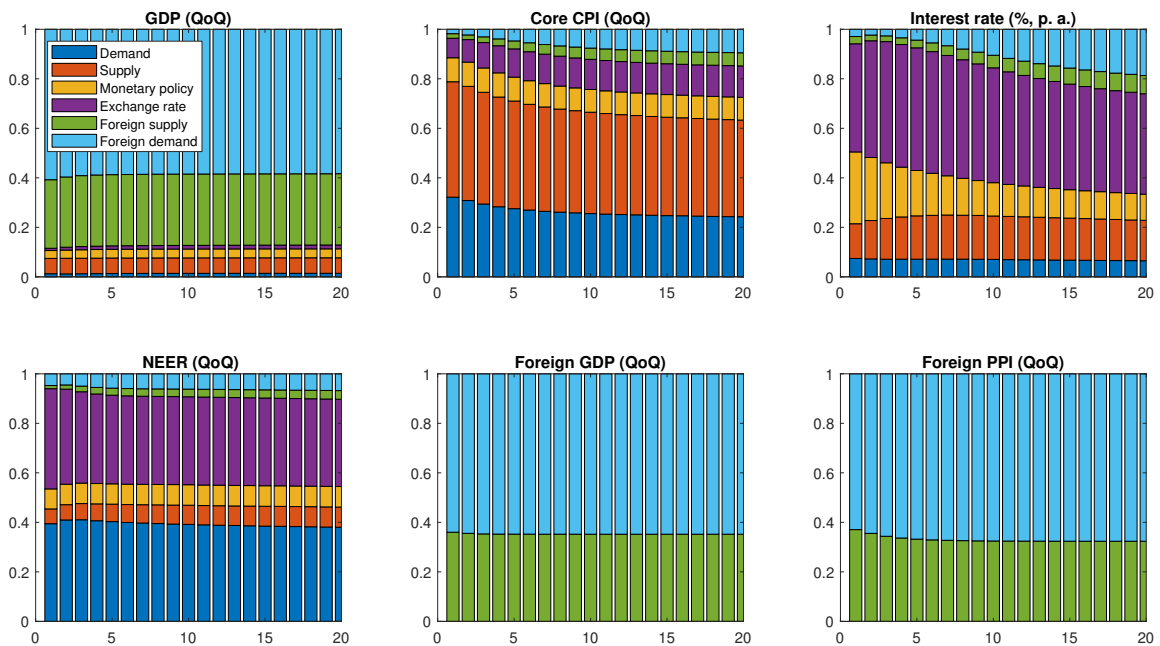
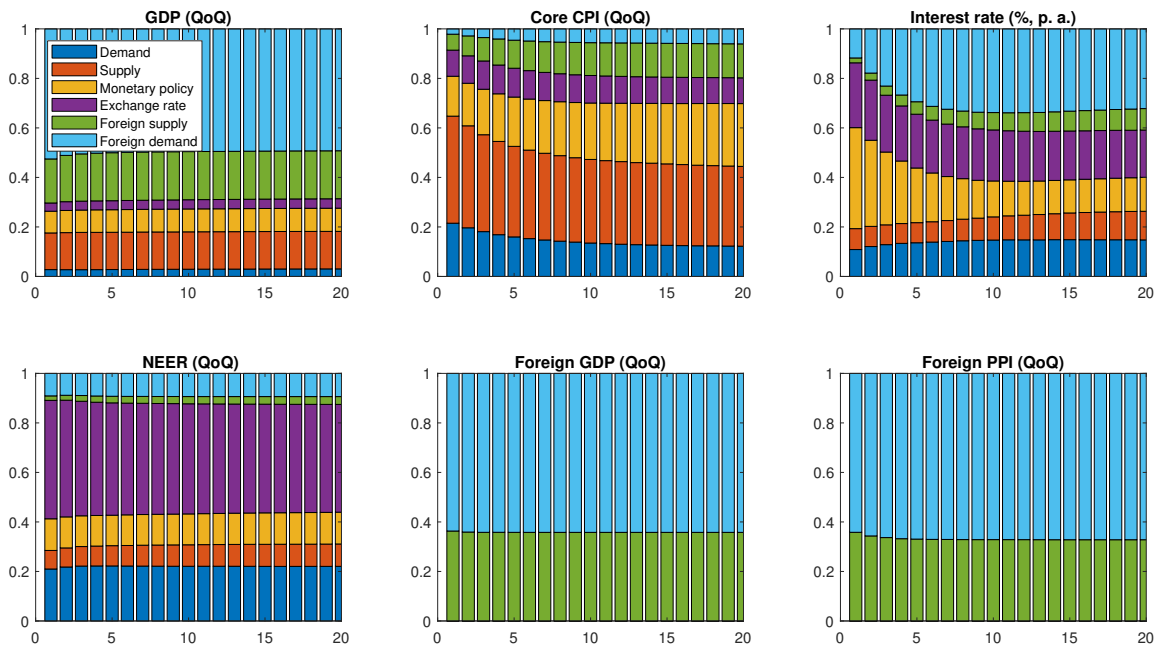


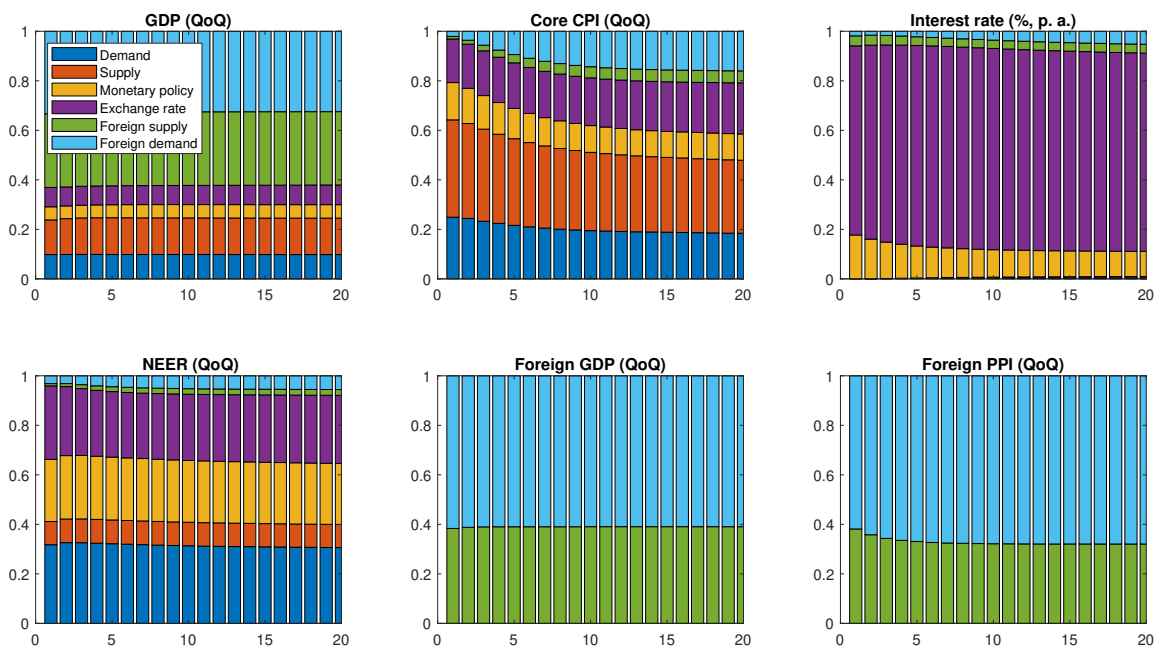
Figure D18: Hungary



**Figure D19: Poland**

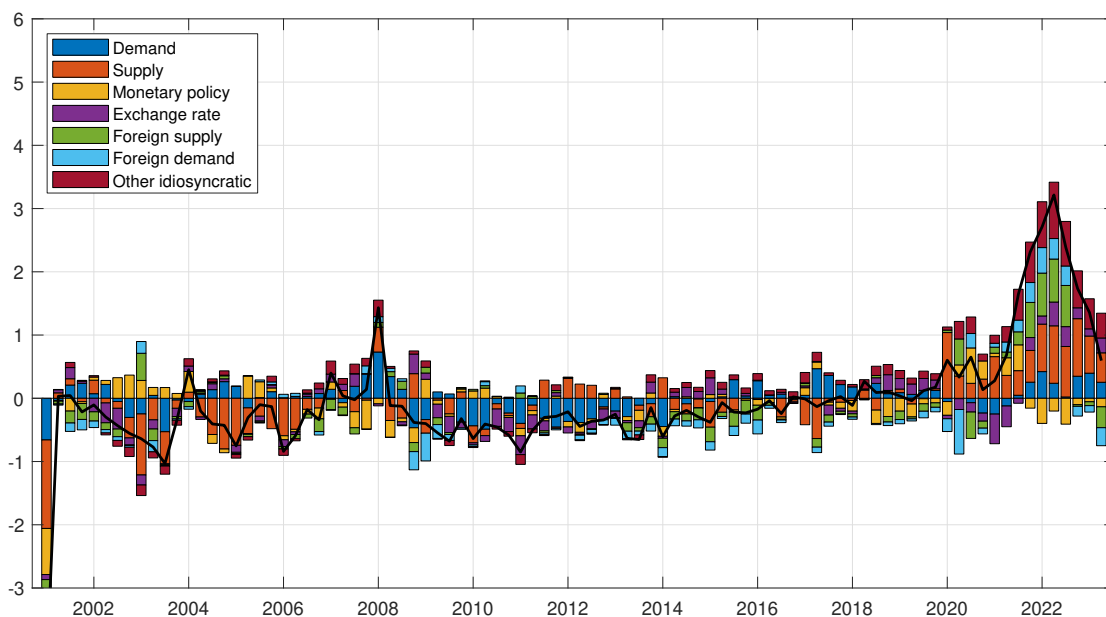


**Figure D20: Slovakia**



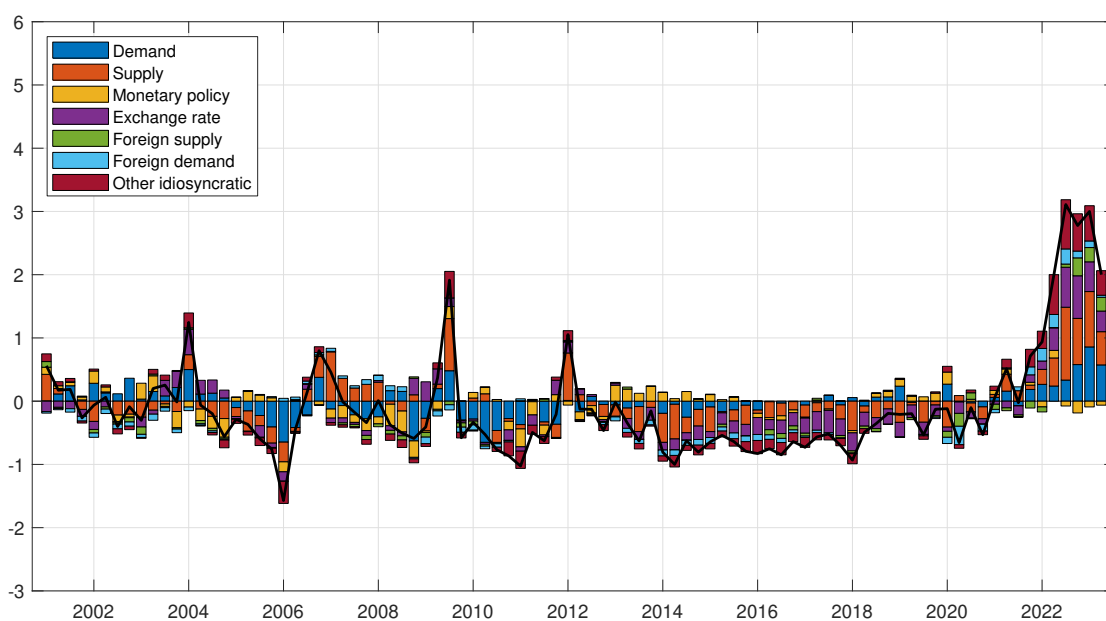
## D.6 Historical Decomposition of Core Inflation

**Figure D21: Czechia**

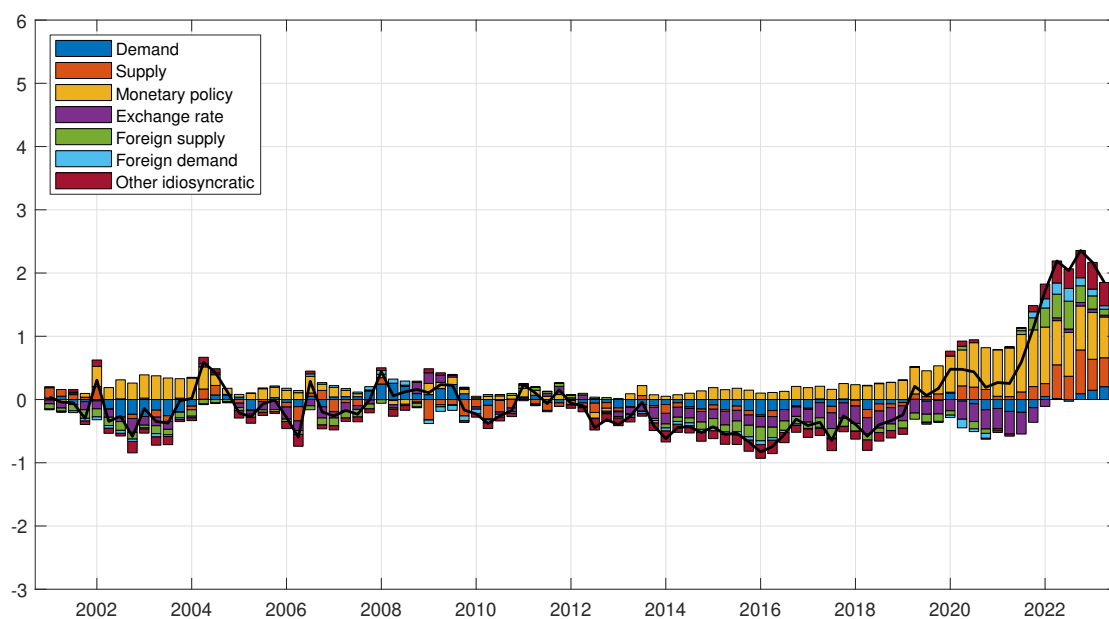


**Note:** Contribution of shocks to the quarter-on-quarter change in the core component of the CPI index, in percentage points. Deviations from the mean and from the contribution of the initial conditions. The y-axis has the same range as Figures in Appendix C.3 for ease of comparison with the decomposition of CPI inflation.

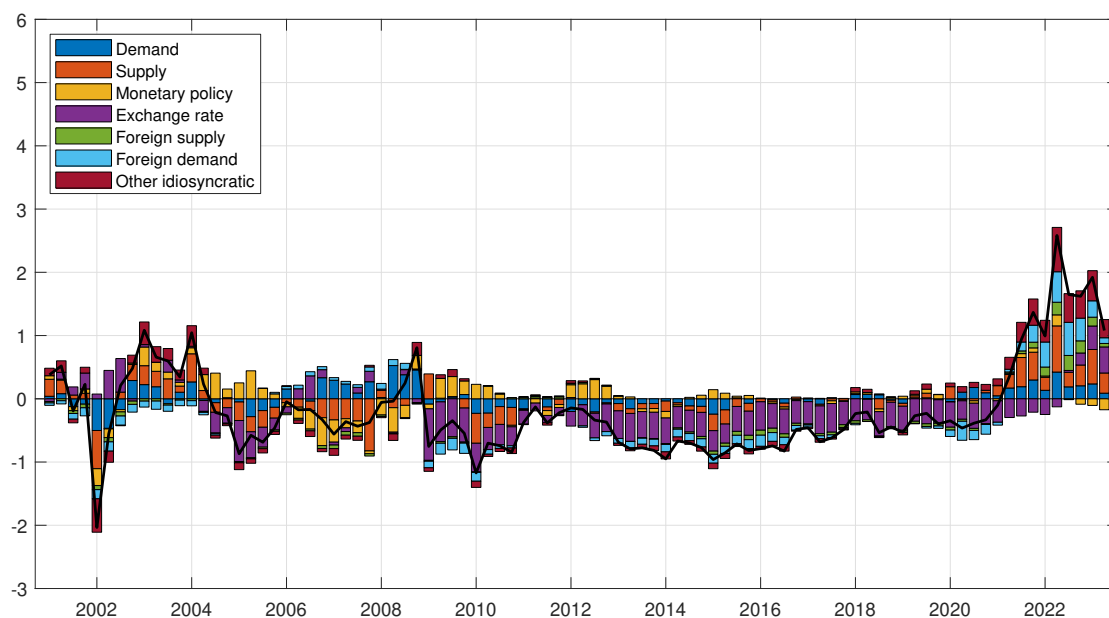
**Figure D22: Hungary**



**Note:** Contribution of shocks to the quarter-on-quarter change in the core component of the CPI index, in percentage points. Deviations from the mean and from the contribution of the initial conditions. The y-axis has the same range as Figures in Appendix C.3 for ease of comparison with the decomposition of CPI inflation.

**Figure D23: Poland**

**Note:** Contribution of shocks to the quarter-on-quarter change in the core component of the CPI index, in percentage points. Deviations from the mean and from the contribution of the initial conditions. The y-axis has the same range as Figures in Appendix C.3 for ease of comparison with the decomposition of CPI inflation.

**Figure D24: Slovakia**

**Note:** Contribution of shocks to the quarter-on-quarter change in the core component of the CPI index, in percentage points. Deviations from the mean and from the contribution of the initial conditions. The y-axis has the same range as Figures in Appendix C.3 for ease of comparison with the decomposition of CPI inflation.



## CNB Working Paper Series (since 2023)

WP 5/2024	Natálie Dvořáková Tomáš Šestořád	<i>Origins of post-COVID-19 inflation in central European countries</i>
WP 4/2024	Volha Audzei Ivan Sutóris	<i>A heterogeneous agent model of energy consumption and energy conservation</i>
WP 3/2024	František Brázdík Tatiana Keseliová Karel Musil Radek Šnobl Jan Šolc Stanislav Tvrz Jan Žáček	<i>Understanding inflation expectations: Data, drivers and policy implications</i>
WP 2/2024	Jiří Gregor	<i>A stress test approach to the calibration of borrower-based measures: A case study of the Czech Republic</i>
WP 1/2024	Michal Franta Jan Vlček	<i>Wage-price spirals: A risk-based approach</i>
WP 19/2023	Josef Bajzík Jan Janků Simona Malovaná Klára Moravcová Ngoc Anh Ngo	<i>Monetary policy has a long-lasting impact on credit: Evidence from 91 VAR studies</i>
WP 18/2023	Martin Hodula Lukáš Pfeifer Ngoc Anh Ngo	<i>Easing of borrower-based measures: Evidence from Czech loan-level data</i>
WP 17/2023	Josef Bajzík Tomáš Havránek Zuzana Iršová Jiří Novák	<i>Do shareholder activism announcements affect stock prices? A meta-analysis</i>
WP 16/2023	Nino Buliskeria Jaromír Baxa Tomáš Šestořád	<i>Uncertain Trends in Economic Policy Uncertainty</i>
WP 15/2023	Josef Švéda Jiří Panoš Vojtěch Siuda	<i>Modelling risk-weighted assets: Looking beyond stress tests</i>
WP 14/2023	Tomáš Adam Jan Bělka Martin Hlůže Jakub Matějů Hana Prause Jiří Schwarz	<i>Ace in hand: The value of card data in the game of nowcasting</i>
WP 13/2023	Michal Andrlé Jan Brůha	<i>A sparse Kalman filter: A non-recursive approach</i>
WP 12/2023	Zuzana Gric Jan Janků Simona Malovaná	<i>What drives sectoral differences in currency derivate usage in a small open economy? Evidence from supervisory data</i>
WP 11/2023	Dominika Ehrenbergerová Simona Malovaná	<i>How do climate policies affect holdings of green and brown firms' securities?</i>

	Caterina Mendicino	
WP 10/2023	Josef Bajzík	<i>Does shareholder activism have a long-lasting impact on company value? A meta-analysis</i>
WP 9/2023	Jan Brůha Hana Brůhová Foltýnová	<i>Long-term impacts of the COVID-19 pandemic on working from home and online shopping: Evidence from a Czech panel survey</i>
WP 8/2023	František Brázdík Karel Musil Stanislav Tvrz	<i>Implementing yield curve control measures into the CNB core forecasting model</i>
WP 7/2023	Alexis Derviz	<i>Foreign exchange implications of CBDCs and their integration via bridge coins</i>
WP 6/2023	Simona Malovaná Dominika Ehrenbergerová Zuzana Gric	<i>What do economists think about the green transition? Exploring the impact of environmental awareness</i>
WP 5/2023	Milan Szabo	<i>Cyclical investment behavior of investment funds: Its heterogeneity and drivers</i>
WP 4/2023	Monika Junicke Jakub Matějů Haroon Mumtaz Angeliki Theophilopoulou	<i>Distributional effects of monetary policy shocks on wage and hours worked: Evidence from the Czech labor market</i>
WP 3/2023	Simona Malovaná Jan Janků Martin Hodula	<i>Macroprudential policy and income inequality: The trade-off between crisis prevention and credit redistribution</i>
WP 2/2023	Michal Franta	<i>The Application of multiple-output quantile regression on the US financial cycle</i>
WP 1/2023	Martin Veselý	<i>Finding the optimal currency composition of foreign exchange reserves with a quantum computer</i>

## CNB Research and Policy Notes (since 2023)

RPN 2/2023	Eva Hromádková Ivana Kubicová Branislav Saxa	<i>How does interest rate pass-through change over time? Rolling windows and the role of the credit risk premium in the pricing of Czech loans</i>
RPN 1/2023	Tomáš Adam Aleš Michl Michal Škoda	<i>Balancing volatility and returns in the Czech National Bank Bank's foreign exchange portfolio</i>



CZECH NATIONAL BANK  
Na Příkopě 28  
115 03 Praha 1  
Czech Republic

ECONOMIC RESEARCH DIVISION  
Tel.: +420 224 412 321  
Fax: +420 224 412 329  
<http://www.cnb.cz>  
e-mail: [research@cnb.cz](mailto:research@cnb.cz)

ISSN 1803-7070